



**2010-11 SCHEDULE**

Date	Opponent	Time
Nov. 5	^Christian Brothers	97-67
Nov. 12	@Southern Illinois	W 62-50
Nov. 14	@Indiana State	L 70-62
Nov. 17	@Belmont	W 73-52
Nov. 21	@Colorado	L 78-67
Nov. 23	@Air Force	W 91-87
Dec. 2	*@Morehead State	L 103-82
Dec. 4	*@Eastern Kentucky	W 61-46
Dec. 7	@Missouri	L 53-30
Dec. 9	@Vanderbilt	L 72-60
Dec. 11	@Evansville	2 p.m.
Dec. 19	Indiana State	2 p.m.
Dec. 22	*Murray State	7:30 p.m.
Dec. 28	@Louisville	6 p.m.
Dec. 30	@Kentucky	6 p.m.
Jan. 6	*Austin Peay	7 p.m.
Jan. 8	*Tennessee State	4 p.m.
Jan. 13	*@Tennessee Tech	5:30 p.m.
Jan. 15	*@Jacksonville State	2 p.m.
Jan. 19	*Southeast Missouri	7:30 p.m.
Jan. 22	*Eastern Illinois	4 p.m.
Jan. 29	*@Murray State	4 p.m.
Feb. 3	*@Austin Peay	5:30 p.m.
Feb. 5	*@Tennessee State	5:30 p.m.
Feb. 10	*Jacksonville State	5:30 p.m.
Feb. 12	*Tennessee Tech	4 p.m.
Feb. 17	*@Eastern Illinois	5:30 p.m.
Feb. 19	*@Southeast Missouri	4 p.m.
Feb. 24	*Eastern Kentucky	7:30 p.m.
Feb. 26	*Morehead State	4 p.m.
March 2-5	#OVC Tournament	TBA

Home Games in Bold

^Exhibition

\*Ohio Valley Conference Game

#Municipal Auditorium - Nashville, Tenn.

**SKYHAWKS END MONSTROUS ROAD TRIP AT EVANSVILLE**



UT MARTIN  
**SKYHAWKS**

Record: 4-5

Away: 4-5

OVC: 1-1

Last 5: 2-3

2009-10: 11-19

Avg. PPG: 65.3

Def. PPG: 67.9

**Top Scorer**

#11 Heather Butler  
19.3 PPG

**Top Rebounder**

#20 Jaclissa Haislip  
8.0 RPG

**Most Assists**

#11 Heather Butler  
2.8 APG

**Head Coach**

Kevin McMillan  
Rhodes, 1989  
2nd Season

Overall: 15-24

At UTM: Same



EVANSVILLE  
**PURPLE ACES**

Record: 5-3

Home: 4-1

MVC: 0-0

Last 5: 3-2

2009-10: 4-26

Avg. PPG: 64.2

Def. PPG: 63.9

**Top Scorer**

#25 Samantha Heck  
11.3 PPG

**Top Rebounder**

#25 Samantha Heck  
5.9 RPG

**Most Assists**

#12 Staci Gillum  
3.5 APG

**Head Coach**

Misty Murphy  
Colorado State, 1998  
3rd Season

Overall: 132-113

At UE: 24-48

**UTM ALL-TIME VS. UE**

Evansville leads 7-2

Last Meeting ..... Nov. 19, 2004

Game Result ..... UE 54, @UTM 44

Streak ..... UE W5

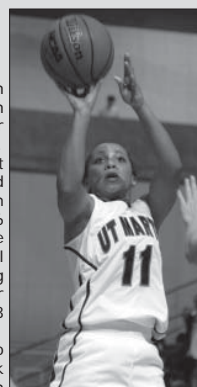
First Meeting ..... Nov. 23, 1985

UTM vs. UE in Evansville ..... 0-4

UTM vs. UE in Martin..... 2-3

**PLAYER TO WATCH...**

#11 Heather Butler  
Freshman Guard  
Medina, Tenn.



Butler has been even better than advertised through her first nine career games.

As one of the most highly-anticipated recruits in program history, the 5-6 sparkplug leads the team in nine statistical categories, including scoring (19.3 points per outing) and assists (2.8 per contest).

After playing two seasons under Skyhawk head coach Kevin McMillan at Gibson County High School (including a 39-0 state championship run in 2008-09), Butler has scored at least 12 points in every game so far this season. Her prolific scoring talents were put on display in consecutive games at Air Force on Nov. 23 (28 points) and Morehead State (31 points) on Dec. 2.

**OPENING TIP-OFF**

The University of Tennessee at Martin Skyhawks will try for an even split on its season-opening 10-game road trip when it takes on the Evansville Purple Aces at Roberts Stadium.

UT Martin - the youngest team in Division-I women's basketball for the second consecutive year - is coming off a 72-60 loss at in-state foe Vanderbilt on Thursday night. In that game, the freshman trio of Heather Butler, Jaclissa Haislip and Jasmine Newsome combined to make UT Martin's last 20 field goals, as well as score 56 of the team's 60 total points. Each player logged the full 40 minutes as Butler (game-high 20 points), Haislip (19) and Newsome (17) displayed their talents against the perennial Southeastern Conference powerhouse.

Evansville is coming off a mid-week victory over an in-state rival of its own - a 51-49 nailbiter at home over Butler on Dec. 7. In that game, Briyana Blair's 17 points off the bench lifted the Purple Aces to their third win in their last four games.

Samantha Heck leads Evansville in scoring with 11.3 points per game, while Blair is the only other Purple Ace to average double-figures (10.6 ppg).

**UT MARTIN PROBABLE STARTING LINEUP**

**4-5 Overall  
1-1 OVC**



#11

**Heather Butler**  
5-6, Freshman  
19.3 PPG, 4.7 RPG,  
2.8 APG, 1.0 SPG



#12

**Jasmine Newsome**  
5-7, Freshman  
16.4 PPG, 3.9 RPG,  
2.1 APG, 1.9 SPG



#14

**Taylor Hall**  
5-9, Junior  
2.7 PPG, 3.1 RPG,  
2.0 APG, 0.9 SPG



#20

**Jaclissa Haislip**  
6-0, Freshman  
10.2 PPG, 8.0 RPG,  
1.0 APG, 1.9 SPG



#22

**Alecia Weatherly**  
5-11, Senior  
3.6 PPG, 2.8 RPG,  
0.5 APG, 0.6 SPG

# QUICK FACTS / ROSTER

## UT MARTIN QUICK FACTS

**Founded:** 1900; Senior College, 1951  
**Enrollment:** 8,100  
**Nickname:** Skyhawks  
**Colors:** Navy Blue and Orange  
**Affiliation:** NCAA Division I  
**Conference:** Ohio Valley  
**Chancellor:** Dr. Thomas Rakes  
**Director of Athletics:** Phil Dane  
**Athletics Web Site:** www.UTMSports.com

## UTM BASKETBALL PERSONNEL

**Head Coach:** Kevin McMillan  
**Alma Mater:** Rhodes, 1989  
**Tenure at UT Martin:** 2nd season  
**Career Record:** 15-24  
**Office Telephone:** (731) 881-7681  
**E-Mail Address:** kcmillan@utm.edu

**Assistant Coach:** Brian Haskins  
**Alma Mater:** Lambuth, 1999  
**Tenure at UT Martin:** 2nd season

**Assistant Coach:** David Russell  
**Alma Mater:** Union, 1975  
**Tenure at UT Martin:** 1st season

**Assistant Coach:** Stacie Evans  
**Alma Mater:** UT Martin, 2004  
**Tenure at UT Martin:** 1st season

**Grad. Assistant Coach:** Heather Scruggs  
**Alma Mater:** Lambuth, 2009  
**Tenure at UT Martin:** 2nd season

## UTM BASKETBALL QUICK FACTS

**2009-10 Overall Record:** 11-19 (.367)  
**2009-10 OVC Record/Finish:** 8-10/4th  
**Postseason:** OVC Semifinals  
**Letterwinners Returning/Lost:** 2/13  
**Starters Returning/Lost:** 1/4  
**Newcomers:** 12

**First Year of Basketball:** 1969  
**Home Arena/Capacity:** Kathleen and Tom Elam Center/5,000  
**Press Row Number:** (731) 881-7694  
**All-Time Basketball Record:** 451-624 (.420)  
**All-Time OVC Record:** 117-179 (.395)

## NUMERICAL ROSTER

No.	Name	Pos.	Ht.	Class	Hometown (Previous School)
3	Allison Wright	G	5-7	R-SO	Murfreesboro, Tenn. (Siegel HS)
5	Matrekia Minter	F	5-11	FR	Bolivar, Tenn. (Central HS)
11	Heather Butler	G	5-6	FR	Medina, Tenn. (Gibson Co. HS)
12	Jasmine Newsome	G	5-7	FR	Millington, Tenn. (Central HS)
14	Taylor Hall	G	5-9	JR	Mt. Juliet, Tenn. (Roane St. CC)
15	Grace Ann Swaim	G	5-8	FR	Martin, Tenn. (Westview HS)
20	Jaclissa Haislip	G/F	6-0	FR	Murfreesboro, Tenn. (Riverdale HS)
22	Alecia Weatherly	F	5-11	SR	Lobelville, Tenn. (Perry Co. HS)
32	Megan White	G	5-7	FR	Heath, Ohio (Heath HS)
33	Rickiesha Bryant	F	6-4	JR	Miami, Fla. (East Mississippi CC)
34	Shelby Crawford	F	6-2	SO	Thomasville, Ala. (East Mississippi CC)
40	Perica Glenn	F	6-1	FR	Milan, Tenn. (Milan HS)
42	Beth Hawn	F	6-2	FR	Chapel Hill, Tenn. (Forrest HS)
45	Aubrey Reedy	G	6-0	FR	Dyer, Tenn. (Gibson Co. HS)

Head Coach: Kevin McMillan (Rhodes, 1989), Second Season  
 Assistant Coaches: Brian Haskins (Lambuth, 1999), Second Season  
 David Russell (Union, 1975), First Season  
 Stacie Evans (UT Martin, 2004), First Season  
 Graduate Assistant: Heather Scruggs (Lambuth, 2009), Second Season

## PRONUNCIATION GUIDE

Name	Pronunciation
#5 Matrekia Minter	Muh-tree-ka
#20 Jaclissa Haislip	Juh-cliss-a
#33 Rickiesha Bryant	Ruh-kee-sha
#40 Perica Glenn	Per-ree-ka

# SKYHAWKS

# *HEAD COACH*



Kevin McMillan

**Second Season**

**Rhodes, 1989**

**UTM**

Kevin McMillan said the best thing about his first season as the head coach at The University of Tennessee at Martin “was seeing the players who bought into his system reap the rewards from sacrificing and believing.”

Now McMillan, the eighth head coach in UT Martin women’s basketball history, is confronted with a tougher challenge - enduring one of the toughest regular season schedules in school history and getting back to the Ohio Valley Conference tournament in Nashville. “I am looking forward to this season,” McMillan said. “We are young, but I am anxious to watch these kids compete. Last year’s team reaffirmed that if you continuously do things the right way, you will be rewarded.”

The Skyhawks finished the season with an 11-19 overall record and an 8-10 mark in the OVC. The No. 4-seeded Skyhawks advanced to the OVC tournament semifinals after knocking off No. 5 Eastern Kentucky 51-47 in Skyhawk Arena. The season came to an end in the tournament semifinals when the Skyhawks ran out of gas against No. 1 Eastern Illinois, losing 65-51. McMillan was named OVC Coach of the Year, while junior Alecia Weatherly and freshman LaBrica Ward were named to the OVC All-Newcomer team.

The much improved OVC just adds to the challenge for the Skyhawks this season, but McMillan’s background has prepared him to lead the upstart team in the right direction.

Before UT Martin, McMillan spent two seasons as an assistant coach at Middle Tennessee State, and he has 17 years experience as a high school head coach. He sports an overall record of 484-135 and most recently (2008-09) led Gibson County High School to an undefeated 35-0 season and a Tennessee state championship.

At Middle Tennessee, McMillan was the head assistant in charge of recruiting and on-floor coaching. As a recruiter he put together one of the top 10 recruiting classes in the nation according to Blue Star Scouting Services in 2005, while also bringing in a junior college All-American and the 2007 Sun Belt Conference Newcomer of the Year. His recruiting classes helped Middle Tennessee claim back-to-back Sun Belt championships in 2006 and 2007, along with a pair of berths in the NCAA Tournament. In the 2006-07 season, Middle Tennessee recorded a nation’s best and a school record 27 consecutive wins and became the first team in Sun Belt history to go through the conference schedule with a record of 18-0, while also defeating No. 8 Georgia and achieving a rank of No. 16 in the AP Top 25.

As a floor coach, McMillan was responsible for the offensive and defensive game plans and implementation. During his tenure, Middle Tennessee had the top turnover margin in the country (+16), while the offense was No. 1 in the country for three-pointers per game (9.2) and No. 4 in the nation in scoring per game (81.6). While McMillan was on the sidelines at Middle Tennessee, the Blue Raiders achieved a record of 50-15 overall.

In the high school ranks, McMillan has proven himself as one of the most successful women’s head coaches in Tennessee. In his 17 years as a head coach he amassed a record of 435-126, while winning one state title and making six trips to the state tournament. McMillan’s teams have also captured 17 district, region and sub-state championships, earning him numerous coaching accolades. He has twice been named the Jackson Sun’s West Tennessee Coach of the Year, in 2009 and 2003, and the district coach of the year 10 times.

McMillan’s most recent stint was at Gibson County High School from 2007-09. During his tenure, he led Gibson County to a record of 62-6, including a pair of state tournament berths and an undefeated 35-0 run to the 2009 state championship. In his two-year tenure he was named district coach of the year in both 2008 and 2009, as his teams won a pair of region and sub-state tournaments along with a district crown in 2009.

Before jumping to the collegiate ranks as an assistant at Middle Tennessee, McMillan spent eight years as the head coach at Westview High School in Martin where he compiled a record of 195-67 and reached the state tournament in 2001, 2003 and 2005. His Charger teams won the sub-state championship five times, while he was named the district coach of the year in 2001, 2003 and 2005. The 2003 season earned McMillan his first West Tennessee Coach of the Year honor after leading Westview to the championship game of the Tennessee state tournament.

From 1990-97, McMillan was the head coach at Millington High School, amassing a record of 177-47. He led Millington to five consecutive district championships from 1993-97 along with a pair of sub-state titles in 1994 and 1997. His 1994 squad qualified for the Tennessee state tournament and advanced to the quarterfinal round.

McMillan played basketball at Wake Forest for one season, 1985, before transferring to Rhodes College to finish out his career from 1986-89. At Rhodes he was a three-time all-conference selection and in 1988 was named the Southern Collegiate Athletic Conference Player of the Year. In only three seasons, McMillan scored 1,372 career points and still ranks ninth all-time at Rhodes for career-points scored.

# QUICK HITS

## UTM FROSH DOMINATING OVC WEEKLY ACCOLADES

The Skyhawks have accounted for three of the four Ohio Valley Conference Freshman of the Week awards that have been handed out so far in the 2010-11 basketball season.

Jasmine Newsome won the award on Dec. 6, Heather Butler brought home the honors on Nov. 23 and Beth Hawn was named the recipient of the accolade on Nov. 16.

## YOUNGEST TEAM IN THE COUNTRY

With just two years of Division-I experience (one each for Alecia Weatherly and Allison Wright), the Skyhawks are the nation's youngest Division-I squad.

## BUTLER GOES THE DISTANCE

Freshman guard Heather Butler has played all 160 minutes over the Skyhawks' last four games (at Morehead State, at Eastern Kentucky, at Missouri and at Vanderbilt).

## 90 POINTS FOR THE WIN

When UT Martin defeated Air Force 91-87 on Nov. 23, it was the first time a Skyhawk team had scored 90 points and won the game since a 94-52 decision over Arkansas-Pine Bluff on Dec. 30, 1998.

## HAISLIP POSTS BACK-TO-BACK DOUBLE-DOUBLES

Freshman Jaclissa Haislip recorded back-to-back double-doubles against Colorado on Nov. 21 (17 points, 10 rebounds) and Belmont on Nov. 17 (17 points, 11 rebounds).

## YOUNG STARTING FIVE

UT Martin head coach Kevin McMillan opted to start five true freshmen in the season's first four games of the season at Southern Illinois, Indiana State, Belmont and Colorado.

The starting five for each game featured Beth Hawn, Aubrey Reedy, Heather Butler, Jasmine Newsome and Jaclissa Haislip.

## SKYHAWKS BENEFIT FROM CANADIAN SUMMER TOUR

The Skyhawks got the chance to take a 10-day, five-game tour of Canada over the summer, winning their first four games before falling in the final contest to go 4-1.

## 2010-11 RADIO/TV ROSTER



#3 Allison Wright  
R-So. • G • 5-7  
Murfreesboro, Tenn.



#5 Matrikia Minter  
Fr. • F • 5-11  
Bolivar, Tenn.



#11 Heather Butler  
Fr. • G • 5-6  
Medina, Tenn.



#12 Jasmine Newsome  
Fr. • G • 5-7  
Millington, Tenn.



#14 Taylor Hall  
Jr. • G • 5-9  
Mount Juliet, Tenn.



#15 Grace Ann Swaim  
Fr. • G • 5-8  
Martin, Tenn.



#20 Jaclissa Haislip  
Fr. • G/F • 6-0  
Murfreesboro, Tenn.



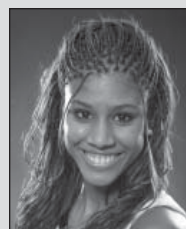
#22 Alecia Weatherly  
Sr. • F • 5-11  
Lobelville, Tenn.



#32 Megan White  
Fr. • G • 5-7  
Heath, Ohio



#33 Rickiesha Bryant  
Jr. • F • 6-4  
Miami, Fla.



#34 Shelby Crawford  
So. • F • 6-2  
Thomasville, Ala.



#40 Perica Glenn  
Fr. • F • 6-1  
Milan, Tenn.



#42 Beth Hawn  
Fr. • F • 6-2  
Chapel Hill, Tenn.



#45 Aubrey Reedy  
Fr. • G • 6-0  
Dyer, Tenn.

# THE LAST TIME OUT...

## FRESHMAN TRIO SHINES BRIGHT ON THE BIG STAGE AS SKYHAWKS FALL 72-60 AT VANDERBILT

NASHVILLE, Tenn. - Freshmen Heather Butler, Jaclissa Haislip and Jasmine Newsome combined to make the last 20 field goals and pour in 56 of The University of Tennessee at Martin's 60 points tonight as the Skyhawks battled for all 40 minutes in a 72-60 loss at Vanderbilt in Memorial Gymnasium.

All three players logged the full 40 minutes for UT Martin. Butler finished with a game-high 20 points (7-for-17 shooting), Haislip poured in 19 points on 7-of-10 shooting, and Newsome tallied 17 points for the Skyhawks (4-5), who were playing their ninth straight road game to begin the 2010-11 campaign.

"We could have laid down a couple times but we didn't," Skyhawk head coach Kevin McMillan said. "We've got to get over the hump to get where we want to be. We've played an SEC team and two Big 12 teams and nobody else in our conference is doing what we are doing. We thought if we had any chance this year, this team is going to have to cram - not only play the schedule we have played but play them on the road. We're battling and getting better but we're not satisfied with a 12-point game. We really were never out of the game but we got tired for a couple of plays in the second half and we gave them seven points in a hurry and that was the difference in the game."

Hannah Tuomi collected a double-double (15 points, 13 rebounds), making all seven of her field goal attempts to lead the Commodores (6-3). Gabby Smith's 18 points led Vanderbilt, while Jasmine Lister (13 points) and Elan Brown (11) also scored double-figures for the Commodores.

A Taylor Hall layup got the Skyhawks on the scoreboard just 50 seconds into the game to tie the score at 2-all. From that point on, the spectacular freshman duo accounted for the rest of the team's field goals and the team's next 43 points until an Aubrey Reedy free throw at the 8:42 mark in the second half against the perennial Southeastern Conference powerhouse.

Haislip drained a trey at the 17:02 mark in the first half to give UT Martin a 5-3 advantage. Vanderbilt went ahead 55 seconds later but Haislip responded with a layup off a feed from Hall to tie the game at 7-7.

After a Newsome jumper at the 12:44 mark, the Commodores put together a 13-0 run over the next 4:36 to go on top by a 24-9 score. It was then UT Martin's turn to make a run, as the Skyhawks unleashed a 12-1 run to get back within four points off a Haislip three-pointer with 5:33 remaining in the first half. The Skyhawks would slice their deficit to three points on three more occasions late in the first half before heading into the locker room down 34-30.

Haislip led all scorers with 13 points in the first stanza, as Butler also had cracked double-figures (11 points) for UT Martin, who outshot the Commodores in the game's first 20 minutes (13-for-29; 44.8 percent). Tuomi and Brown scored 12 and 11 points, respectively, to lead Vanderbilt, who shot 44.1 percent (15-for-34) from the field.

A pair of Newsome free throws opened the game's scoring in the second half, providing a one-possession game for the Skyhawks at 34-32. Smith then scored five straight points for Vanderbilt, but Butler knocked down two free throws at the 15:40 mark to make the score 39-34.

Back-to-back jumpers by Newsome helped the Skyhawks whittle their deficit to four before the Commodores came back with another run. Consecutive three-pointers and two straight layups led to a 10-1 Vanderbilt run, as it went on top 52-39 with 11:49 to play.

Newsome converted a layup with just under eight minutes to play that made the score 55-48, but the Commodores had one final run left in them. They scored nine unanswered points to go ahead by 16 points - their largest lead of the evening - with 5:46 to go.

The Skyhawks kept grinding it out - as a Butler three-pointer with 54 seconds remaining made the score 70-60 before a layup by Lister 12 seconds later ended the scoring on each side.

Official Basketball Box Score -- Game Totals -- Final Statistics																			
UT Martin vs Vanderbilt																			
12/09/10 7:00 p.m. at Nashville, Tenn. (Memorial Gym)																			
<b>UT Martin 60 • 4-5</b>																			
##	Player	Total	3-Ptr	Rebounds	PF	TP	A	T/O	Blk	Stl	Min				Deadball				
FG	FGA	FG-FGA	FT-FTA	Off	Def	Tot									Rebounds				
20	HAISLIP, Jaclissa	f	7-10	3-5	2-2	2	3	5	3	19	0	2	0	0	40				
22	WEATHERLY, Alecia	f	0-0	0-0	0-0	0	0	0	5	0	1	0	0	17					
11	BUTLER, Heather	g	7-17	2-8	4-4	0	5	5	1	20	1	2	0	1	40				
12	NEWSOME, Jasmine	g	6-19	0-1	5-6	2	1	3	1	17	3	4	0	2	40				
14	HALL, Taylor	g	1-8	0-7	0-0	2	5	7	3	2	3	4	0	1	34				
32	WHITE, Megan	g	0-1	0-1	0-0	0	0	0	0	0	0	0	0	3					
34	CRAWFORD, Shelby	g	0-0	0-0	1-2	1	1	2	0	1	0	1	0	4					
42	HAWN, Beth	g	0-0	0-0	0-0	0	1	1	0	0	0	1	0	3					
45	REEDY, Aubrey	g	0-1	0-0	1-2	3	2	5	1	1	0	0	0	19					
Team			2	3	5														
Totals			21-56	5-22	13-16	12	21	33	14	60	7	15	0	4	200				
FG % 1st Half:		13-29	44.8%	2nd half:	8-27	29.6%	Game:		21-56	37.5%						Deadball			
3FG % 1st Half:		4-15	26.7%	2nd half:	1-7	14.3%	Game:		5-22	22.7%						Rebounds			
FT % 1st Half:		0-0	0.0%	2nd half:	13-16	81.3%	Game:		13-16	81.3%						0.1			
<b>Vanderbilt 72 • 6-3</b>																			
##	Player	Total	3-Ptr	Rebounds	PF	TP	A	T/O	Blk	Stl	Min				Deadball				
FG	FGA	FG-FGA	FT-FTA	Off	Def	Tot									Rebounds				
15	TUOMI, Hannah	f	7-7	0-0	1-2	5	8	13	4	15	0	2	0	0	35				
33	SILINSKI, Rebecca	f	1-1	0-0	0-0	1	1	2	0	2	0	0	0	1	5				
11	LISTER, Jasmine	g	5-17	2-11	1-3	0	1	1	1	13	5	1	0	1	33				
22	RHODADS, Jence	g	3-8	0-0	3-4	2	2	4	1	9	9	0	2	1	34				
32	SMITH, Gabby	g	7-15	3-9	1-1	1	4	5	3	18	2	3	0	2	35				
04	PULEO, Angela	g	0-6	0-5	0-0	1	1	2	0	0	2	1	0	20					
12	COLEMAN, Jordan	g	2-2	0-0	0-0	1	3	4	2	4	0	1	0	12					
30	BROWN, Elan	g	5-8	1-2	0-0	3	2	5	5	11	0	2	0	1	21				
34	CLARKE, Tiffany	g	0-0	0-0	0-0	0	0	0	1	0	0	2	0	1	4				
44	JAROSZ, Tori	g	0-0	0-0	0-0	0	1	1	0	0	0	0	0	0	1				
Team			0	3	3														
Totals			30-64	6-27	6-10	14	26	40	17	72	18	12	3	6	200				
FG % 1st Half:		15-34	44.1%	2nd half:	15-30	50.0%	Game:		30-64	46.9%						Deadball			
3FG % 1st Half:		2-15	13.3%	2nd half:	4-12	33.3%	Game:		6-27	22.2%						Rebounds			
FT % 1st Half:		2-5	40.0%	2nd half:	4-5	80.0%	Game:		6-10	60.0%						2			
Officials: Dock Sisk, Erica Bradley, Gina Cross																			
Technical fouls: UT Martin-None. Vanderbilt-None.																			
Attendance: 3764																			
Score by periods												1st	2nd	Total					
UT Martin												30	30	60					
Vanderbilt												34	38	72					
Last FG - UTM 2nd-00:54, VU 2nd-00:46.																			
Largest lead - UTM by 2 1st-17:02, VU by 16 2nd-05:46.																			
Points												In	Off	2nd	Fast	Bench			
UTM												24	15	5	0	2			
VU												42	14	17	8	15			
Score tied - 3 times.																			
Lead changed - 2 times.																			

# SEASON BOX SCORES

Official Basketball Box Score -- Game Totals -- Final Statistics  
 UT Martin vs Southern Illinois  
 11/12/10 7:05 p.m. at Carbondale, Ill.

UT Martin 62 • 1-0

#	Player	Total		3-Ptr		Rebounds			PF	TP	A	TO	Blk	Stl	Min
		FG-FGA	FG-FGA	FT-FTA	Off	Def	Tot								
42	HAWN, Beth	f	6-10	1-1	1-3	1	6	7	3	14	0	1	1	1	32
11	BUTLER, Heather	g	6-20	1-7	0-1	4	1	5	0	13	1	5	0	0	29
12	NEWSOME, Jasmine	g	7-20	4-10	6-7	2	4	6	2	24	1	4	0	2	39
20	HAISLIP, Jaclissa	g	0-4	0-2	0-2	3	6	9	4	0	3	1	1	3	34
45	REEDY, Aubrey	q	2-5	1-1	0-2	5	1	6	2	5	0	2	1	2	25
14	HALL, Taylor	0-1	0-1	0-0	0	3	3	0	0	0	0	1	0	0	8
22	WEATHERLY, Alecia	0-1	0-1	0-0	0	0	0	0	0	0	0	0	0	0	0
32	WHITE, Megan	0-0	0-0	0-0	0	0	0	0	0	0	0	0	0	0	1
33	BRYANT, Rickiesha	1-2	0-0	0-0	1	0	1	3	2	0	0	1	0	8	
34	CRAWFORD, Shelby	1-1	0-0	2-6	2	1	3	0	4	0	2	0	0	19	
40	GLENN, Perica	0-2	0-0	0-0	1	0	1	1	0	0	3	0	1	5	
Team			23-66	7-23	9-21	21	29	50	19	62	5	19	4	9	200
Totals			23-66	7-23	9-21	21	29	50	19	62	5	19	4	9	200

FG % 1st Half: 8-31 25.8% 2nd half: 15-35 42.9% Game: 23-66 34.8%  
 3FG % 1st Half: 3-10 30.0% 2nd half: 4-13 30.8% Game: 7-23 30.4%  
 FT % 1st Half: 0-5 0.0% 2nd half: 9-16 56.3% Game: 9-21 42.9%

Southern Illinois 50 • 0-1

#	Player	Total		3-Ptr		Rebounds			PF	TP	A	TO	Blk	Stl	Min
		FG-FGA	FG-FGA	FT-FTA	Off	Def	Tot								
15	Charnise Mitchell	f	2-6	0-2	4-6	3	2	5	4	8	1	2	0	1	28
20	Kaitrina Swingler	f	5-9	0-1	4-6	5	5	10	5	14	1	4	1	0	25
21	CICI Shannon	c	0-2	0-0	0-2	0	0	0	0	0	0	1	1	0	7
40	Brooke LeMar	g	3-9	0-3	1-2	1	0	1	3	7	5	3	0	4	30
22	Teri Oliver	g	5-18	4-15	3-4	1	3	4	17	0	3	1	2	40-	
02	Taylor Ignoto	q	0-1	0-1	0-0	0	1	1	0	0	1	2	0	0	4
03	Olivia Patterson	0-2	0-2	0-0	0	2	2	1	0	0	2	0	0	8	
10	Nneka Nwani	0-2	0-0	0-0	1	1	2	3	0	0	0	0	0	16	
11	Raquel Miller	0-1	0-1	0-0	0	0	0	0	0	0	0	0	1	2	
13	Eboni Crayton	2-6	0-0	0-0	1	3	4	1	4	0	1	1	0	17	
24	Renee Reed	0-0	0-0	0-0	0	0	0	0	0	0	0	0	0	10	
32	Sidney Goins	0-1	0-0	0-0	0	1	1	0	0	0	2	0	0	11	
34	Rani Brandon	0-0	0-0	0-0	0	0	0	0	0	1	0	0	0	2	
Team			17-57	4-25	12-20	14	24	38	21	50	9	20	4	8	200
Totals			17-57	4-25	12-20	14	24	38	21	50	9	20	4	8	200

FG % 1st Half: 6-29 20.7% 2nd half: 11-28 39.3% Game: 17-57 29.8%  
 3FG % 1st Half: 1-14 7.1% 2nd half: 3-11 27.3% Game: 4-25 16.0%  
 FT % 1st Half: 2-4 50.0% 2nd half: 10-16 62.5% Game: 12-20 60.0%

Officials: Alycia Dukas, Mark Briney, Jimmy Lomax  
 Technical fouls: UT Martin-None. Southern Illinois-None.  
 Attendance: 436

Score by periods	1st	2nd	Total
UT Martin	19	43	62
Southern Illinois	15	35	50

Points	In	Off	2nd	Fast	Bench
UTM	Paint	T/O	Chance	Break	
UTM	18	17	13	0	6
SIU	26	15	5	2	4

Last FG - UTM 2nd-00:32, SIU 2nd-00:34  
 Largest lead - UTM by 12 2nd-01:25, SIU by 7 1st-07:35.  
 Score tied - 2 times.  
 Lead changed - 4 times.

Official Basketball Box Score -- Game Totals -- Final Statistics  
 UT Martin vs Indiana State  
 11-14-10 2:05 p.m. at Hulman Center (Terre Haute, Ind.)

UT Martin 62 • 1-1

#	Player	Total		3-Ptr		Rebounds			PF	TP	A	TO	Blk	Stl	Min
		FG-FGA	FG-FGA	FT-FTA	Off	Def	Tot								
42	HAWN, Beth	f	6-12	0-1	0-0	4	6	10	3	12	1	3	0	1	34
45	REEDY, Aubrey	f	0-0	0-0	0-0	1	2	3	3	0	1	1	0	0	10
11	BUTLER, Heather	g	4-14	2-7	8-10	3	1	4	0	18	4	2	0	1	37
12	NEWSOME, Jasmine	g	5-19	2-8	2-2	1	2	3	4	14	2	2	0	1	33
20	HAISLIP, Jaclissa	g	4-8	1-4	3-6	2	4	6	3	12	2	0	0	4	36
00	GLISSON, Erica	0-0	0-0	0-0	0	0	0	0	0	0	0	0	0	0	1
05	MINTER, Matriekia	0-0	0-0	0-0	0	0	0	0	0	0	0	0	0	0	0
14	HALL, Taylor	0-1	0-1	0-0	1	0	1	0	2	0	3	0	0	1	15
15	SWAIM, Grace Ann	0-1	0-0	1-2	0	0	0	0	1	0	1	0	0	0	1
32	WHITE, Megan	0-0	0-0	0-0	0	1	1	0	0	0	0	0	0	0	0
33	BRYANT, Rickiesha	0-1	0-0	1-2	3	3	6	2	1	0	1	1	1	11	
34	CRAWFORD, Shelby	1-4	0-0	2-2	2	4	6	1	4	0	3	0	1	20	
40	GLENN, Perica	0-0	0-0	0-0	0	0	0	0	0	0	1	0	0	2	
Team			20-60	5-21	17-24	19	24	43	20	62	13	13	1	10	200
Totals			20-60	5-21	17-24	19	24	43	20	62	13	13	1	10	200

FG % 1st Half: 10-30 33.3% 2nd half: 10-30 33.3% Game: 20-60 33.3%  
 3FG % 1st Half: 3-13 23.1% 2nd half: 2-8 25.0% Game: 5-21 23.8%  
 FT % 1st Half: 3-8 37.5% 2nd half: 14-16 87.5% Game: 17-24 70.8%

Indiana State 70 • 2-0

#	Player	Total		3-Ptr		Rebounds			PF	TP	A	TO	Blk	Stl	Min
		FG-FGA	FG-FGA	FT-FTA	Off	Def	Tot								
20	Hodge, Moriah	f	2-8	1-2	1-2	3	2	5	5	6	1	2	1	0	34
31	Cooley, Kelsie	f	2-7	0-1	1-1	1	7	8	3	5	2	1	0	0	29
05	Thomas, Shannon	c	1-5	0-0	4-4	1	5	6	2	6	1	0	2	0	22
01	Schoen, Brittany	g	6-10	5-9	3-3	0	2	2	20	1	2	0	0	28	
23	Whitley, Taylor	g	4-6	0-0	8-10	4	2	6	2	16	9	3	1	5	40
15	Oyer, Sadie	0-0	0-0	1-2	0	0	0	0	1	0	0	0	0	1	
24	Vivo, Ilyssa	1-4	1-3	0-0	0	0	0	1	3	0	1	0	0	9	
32	Rademacher, Andrea	1-2	0-0	1-1	0	3	3	1	3	0	0	0	0	7	
33	Munn, Anna	3-9	3-7	1-3	1	2	3	0	10	2	2	0	1	30	
Team			22	2	2	2	2	4	1	1	1	1	1	1	
Totals			20-51	10-22	20-28	12	25	37	17	70	16	15	4	6	200

FG % 1st Half: 8-25 32.0% 2nd half: 12-26 46.2% Game: 20-51 39.2%  
 3FG % 1st Half: 4-9 44.4% 2nd half: 6-13 46.2% Game: 10-22 45.5%  
 FT % 1st Half: 8-13 61.5% 2nd half: 12-15 80.0% Game: 20-28 71.4%

Officials: Charlie Hust (R), Jeff Cross, Alycia Dukas  
 Technical fouls: UT Martin-None. Indiana State-None.  
 Attendance: 3641

Score by periods	1st	2nd	Total
UT Martin	26	36	62
Indiana State	28	42	70

Points	In	Off	2nd	Fast	Bench
INS	Paint	T/O	Chance	Break	
INS	22	21	18	2	6
UTM	18	9	11	4	17

Last FG - UTM 2nd-00:00, INS 2nd-03:06.  
 Largest lead - UTM None, INS by 11 2nd-09:35.  
 Score tied - 1 time.  
 Lead changed - 0 times.

Official Basketball Box Score -- Game Totals -- Final Statistics  
 UT Martin vs BELMONT  
 11-17-10 7:00 p.m. at Nashville, Tenn. (Curb Event Center)

UT Martin 73 • 2-1

#	Player	Total		3-Ptr		Rebounds			PF	TP	A	TO	Blk	Stl	Min
		FG-FGA	FG-FGA	FT-FTA	Off	Def	Tot								
42	HAWN, Beth	f	2-4	0-0	0-0	1	3	4	3	4	0	2	2	1	26
11	BUTLER, Heather	g	6-15	3-10	4-4	1	5	6	0	19	7	0	0	0	34
12	NEWSOME, Jasmine	q	3-8	0-4	0-0	0	0	0	3	6	4	0	0	11	
20	HAISLIP, Jaclissa	g	6-11	5-10	0-0	3	8	11	1	17	1	1	1	2	37
45	REEDY, Aubrey	g	1-3	0-0	0-2	2	4	1	2	0	0	0	0	0	16
00	GLISSON, Erica	0-0	0-0	0-0	0	0	0	0	0	0	0	1	0	1	
05	MINTER, Matriekia	0-1	0-0	0-0	0	0	0	0	0	0	0	0	0	1	
14	HALL, Taylor	3-9	3-9	2-2	1	3	4	1	11	4	3	0	2	32	
15	SWAIM, Grace Ann	0-1	0-1	0-0	1	1	2	0	0	0	1	0	0	4	
22	WEATHERLY, Alecia	2-3	0-0	3-4	3	5	8	1	7	1	1	0	0	15	
32	WHITE, Megan	0-0	0-0	0-0	0	1	1	0	0	0	0	0	0	1	
33	BRYANT, Rickiesha	0-2	0-0	1-2	1	2	3	2	1	0	1	2	0	10	
34	CRAWFORD, Shelby	1-2	0-0	0-0	1	1	2	2	2	1	0	0	0	8	



# SEASON BOX SCORES

Official Basketball Box Score -- Game Totals -- Final Statistics  
 UT Martin vs Vanderbilt  
 12/09/10 7:00 p.m. at Nashville, Tenn. (Memorial Gym)

UT Martin 60 • 4-5

#	Player	Pos	Total			3-Ptr			Rebounds			PF	TP	A	TO	Blk	Stl	Min
			FG-FGA	FG-FGA	FT-FTA	FG-FGA	FG-FGA	FT-FTA	Off	Def	Tot							
20	HAISLIP, Jaclissa	f	7-10	3-5	2-2	2	3	5	3	19	0	2	0	0	0	0	40	
22	WEATHERLY, Alecia	f	0-0	0-0	0-0	0	0	0	5	0	0	1	0	0	0	17		
11	BUTLER, Heather	g	7-17	2-8	4-4	0	5	5	1	20	1	2	0	1	40			
12	NEWSOME, Jasmine	g	6-19	0-1	5-6	2	1	3	1	17	3	4	0	2	40			
14	HALL, Taylor	q	1-8	0-7	0-0	2	5	7	3	2	3	4	0	1	34			
32	WHITE, Megan		0-1	0-1	0-0	0	0	0	0	0	0	0	0	0	3			
34	CRAWFORD, Shelby		0-0	0-0	1-2	1	1	2	0	1	0	1	0	0	4			
42	HAWN, Beth		0-0	0-0	0-0	0	1	1	0	0	0	1	0	0	3			
45	REEDY, Aubrey		0-1	0-0	1-2	3	2	5	1	1	0	0	0	0	19			
Team						2	3	5										
Totals			21-56	5-22	13-16	12	21	33	14	60	7	15	0	4	200			

FG % 1st Half: 13-29 44.8% 2nd half: 8-27 29.6% Game: 21-56 37.5% Deadball Rebounds 0.1  
 3FG % 1st Half: 4-15 26.7% 2nd half: 1-7 14.3% Game: 5-22 22.7%  
 FT % 1st Half: 0-0 0.0% 2nd half: 13-16 81.3% Game: 13-16 81.3%

Vanderbilt 72 • 6-3

#	Player	Pos	Total			3-Ptr			Rebounds			PF	TP	A	TO	Blk	Stl	Min
			FG-FGA	FG-FGA	FT-FTA	FG-FGA	FG-FGA	FT-FTA	Off	Def	Tot							
15	TUOMI, Hannah	f	7-7	0-0	1-2	5	8	13	4	15	0	2	0	0	35			
33	SILINSKI, Rebecca	f	1-1	0-0	0-0	1	1	2	0	2	0	0	1	0	5			
11	LISTER, Jasmine	g	5-17	2-11	1-3	0	1	1	1	13	5	1	0	1	33			
22	RHOADS, Jence	g	3-8	0-0	3-4	2	2	4	1	9	9	0	2	1	34			
32	SMITH, Gabby	g	7-15	3-9	1-1	1	4	5	3	18	2	3	0	2	35			
04	PULEO, Angela		0-6	0-5	0-0	1	1	2	0	0	2	1	0	0	20			
12	COLEMAN, Jordan		2-2	0-0	0-0	1	3	4	2	4	0	1	0	0	12			
30	BROWN, Elan		5-8	1-2	0-0	3	2	5	5	11	0	2	0	1	21			
34	CLARKE, Tiffany		0-0	0-0	0-0	0	0	0	1	0	0	2	0	1	4			
44	JAROSZ, Tori		0-0	0-0	0-0	0	1	1	0	0	0	0	0	0	1			
Team						0	3	3										
Totals			30-64	6-27	6-10	14	26	40	17	72	18	12	3	6	200			

FG % 1st Half: 15-34 44.1% 2nd half: 15-30 50.0% Game: 30-64 46.9% Deadball Rebounds 2  
 3FG % 1st Half: 2-15 13.3% 2nd half: 4-12 33.3% Game: 6-27 22.2%  
 FT % 1st Half: 2-5 40.0% 2nd half: 4-5 80.0% Game: 6-10 60.0%

Officials: Dock Sisk, Erica Bradley, Gina Cross  
 Technical fouls: UT Martin-None, Vanderbilt-None.  
 Attendance: 3764

Score by periods	1st	2nd	Total
UT Martin	30	30	60
Vanderbilt	34	38	72

Points	In Paint	Off T/O	2nd Chance	Fast Break	Bench
UTM	24	15	5	0	2
VU	42	14	17	8	15

Last FG - UTM 2nd-00:54, VU 2nd-00:46.  
 Largest lead - UTM by 2 1st-17:02, VU by 16 2nd-05:46.

Score tied - 3 times.  
 Lead changed - 2 times.

## ***2010-11 UTM TEAM GAME-HIGHS***

POINTS	91	at Air Force (11/23/10)
	82	at Morehead State (12/2/10)
	73	at BELMONT (11-17-10)
	67	at Colorado (11/21/10)
	62	at Indiana State (11-14-10)
	62	at Southern Illinois (11/12/10)
FIELD GOALS MADE	28	at Air Force (11/23/10)
	27	at Morehead State (12/2/10)
FIELD GOAL ATTEMPTS	76	at Morehead State (12/2/10)
	66	at Southern Illinois (11/12/10)
FIELD GOAL PERCENTAGE	.452 (28-62)	at Air Force (11/23/10)
	.426 (26-61)	at BELMONT (11-17-10)
3 PT FIELD GOALS MADE	11	at BELMONT (11-17-10)
	10	at Air Force (11/23/10)
3 PT FG ATTEMPTS	34	at BELMONT (11-17-10)
	24	at Air Force (11/23/10)
	24	at Colorado (11/21/10)
3 PT FG PERCENTAGE	.417 (10-24)	at Air Force (11/23/10)
	.389 (7-18)	at Eastern Kentucky University (12/04/10)
FREE THROWS MADE	25	at Air Force (11/23/10)
	23	at Morehead State (12/2/10)
FREE THROW ATTEMPTS	33	at Morehead State (12/2/10)
	33	at Air Force (11/23/10)
FREE THROW PERCENTAGE	.875 (14-16)	at Eastern Kentucky University (12/04/10)
	.813 (13-16)	at Vanderbilt (12/09/10)
REBOUNDS	50	at Southern Illinois (11/12/10)
	49	at Morehead State (12/2/10)
ASSISTS	14	at Air Force (11/23/10)
	14	at BELMONT (11-17-10)
STEALS	11	at Missouri (12/7/10)
	11	at Air Force (11/23/10)
BLOCKED SHOTS	8	at Morehead State (12/2/10)
	5	at BELMONT (11-17-10)
TURNOVERS	21	at Missouri (12/7/10)
	21	at Morehead State (12/2/10)
FOULS	30	at Morehead State (12/2/10)
	24	at Colorado (11/21/10)

## ***2010-11 OPPONENT TEAM GAME-HIGHS***

POINTS	103	at Morehead State (12/2/10)
	87	at Air Force (11/23/10)
	78	at Colorado (11/21/10)
	72	at Vanderbilt (12/09/10)
	70	at Indiana State (11-14-10)
FIELD GOALS MADE	30	at Vanderbilt (12/09/10)
	29	at Morehead State (12/2/10)
	29	at Air Force (11/23/10)
FIELD GOAL ATTEMPTS	69	at Morehead State (12/2/10)
	64	at Vanderbilt (12/09/10)
FIELD GOAL PERCENTAGE	.537 (29-54)	at Air Force (11/23/10)
	.469 (30-64)	at Vanderbilt (12/09/10)
3 PT FIELD GOALS MADE	10	at Indiana State (11-14-10)
	9	at BELMONT (11-17-10)
3 PT FG ATTEMPTS	33	at BELMONT (11-17-10)
	29	at Eastern Kentucky University (12/04/10)
3 PT FG PERCENTAGE	.615 (8-13)	at Air Force (11/23/10)
	.455 (10-22)	at Indiana State (11-14-10)
FREE THROWS MADE	39	at Morehead State (12/2/10)
	21	at Air Force (11/23/10)
	21	at Colorado (11/21/10)
FREE THROW ATTEMPTS	48	at Morehead State (12/2/10)
	31	at Air Force (11/23/10)
FREE THROW PERCENTAGE	.929 (13-14)	at Eastern Kentucky University (12/04/10)
	.813 (39-48)	at Morehead State (12/2/10)
REBOUNDS	51	at Morehead State (12/2/10)
	44	at Missouri (12/7/10)
ASSISTS	21	at Air Force (11/23/10)
	18	at Vanderbilt (12/09/10)
	18	at Morehead State (12/2/10)
STEALS	13	at Morehead State (12/2/10)
	11	at Missouri (12/7/10)
	11	at Air Force (11/23/10)
	11	at Colorado (11/21/10)
BLOCKED SHOTS	12	at Missouri (12/7/10)
	7	at Morehead State (12/2/10)
TURNOVERS	21	at Missouri (12/7/10)
	21	at Air Force (11/23/10)
FOULS	27	at Morehead State (12/2/10)
	22	at Air Force (11/23/10)

## ***2010-11 UTM TEAM GAME-LOGS***

POINTS	30		at Missouri (12/7/10)
	60		at Vanderbilt (12/09/10)
	61		at Eastern Kentucky University (12/04/10)
	62		at Southern Illinois (11/12/10)
	62		at Indiana State (11-14-10)
FIELD GOALS MADE	11		at Missouri (12/7/10)
	20		at Indiana State (11-14-10)
	20		at Eastern Kentucky University (12/04/10)
FIELD GOAL ATTEMPTS	51		at Eastern Kentucky University (12/04/10)
	52		at Colorado (11/21/10)
FIELD GOAL PERCENTAGE	.186 (11-59)		at Missouri (12/7/10)
	.333 (20-60)		at Indiana State (11-14-10)
3 PT FIELD GOALS MADE	4		at Missouri (12/7/10)
	5		at Indiana State (11-14-10)
	5		at Morehead State (12/2/10)
	5		at Vanderbilt (12/09/10)
3 PT FG ATTEMPTS	18		at Eastern Kentucky University (12/04/10)
	21		at Indiana State (11-14-10)
	21		at Missouri (12/7/10)
3 PT FG PERCENTAGE	.190 (4-21)		at Missouri (12/7/10)
	.217 (5-23)		at Morehead State (12/2/10)
FREE THROWS MADE	4		at Missouri (12/7/10)
	9		at Southern Illinois (11/12/10)
FREE THROW ATTEMPTS	7		at Missouri (12/7/10)
	13		at BELMONT (11-17-10)
FREE THROW PERCENTAGE	.429 (9-21)		at Southern Illinois (11/12/10)
	.571 (4-7)		at Missouri (12/7/10)
REBOUNDS	33		at Vanderbilt (12/09/10)
	34		at Colorado (11/21/10)
ASSISTS	2		at Missouri (12/7/10)
	5		at Southern Illinois (11/12/10)
STEALS	4		at Vanderbilt (12/09/10)
	6		at Morehead State (12/2/10)
	6		at Eastern Kentucky University (12/04/10)
BLOCKED SHOTS	0		at Missouri (12/7/10)
	0		at Vanderbilt (12/09/10)
TURNOVERS	12		at Eastern Kentucky University (12/04/10)
	13		at Indiana State (11-14-10)
FOULS	14		at BELMONT (11-17-10)
	14		at Vanderbilt (12/09/10)

## ***2010-11 UTM TEAM GAME-LOGS***

POINTS	46	at Eastern Kentucky University (12/04/10)
	50	at Southern Illinois (11/12/10)
	52	at BELMONT (11-17-10)
	53	at Missouri (12/7/10)
	70	at Indiana State (11-14-10)
FIELD GOALS MADE	13	at Eastern Kentucky University (12/04/10)
	17	at Southern Illinois (11/12/10)
FIELD GOAL ATTEMPTS	49	at Missouri (12/7/10)
	51	at Indiana State (11-14-10)
FIELD GOAL PERCENTAGE	.228 (13-57)	at Eastern Kentucky University (12/04/10)
	.298 (17-57)	at Southern Illinois (11/12/10)
3 PT FIELD GOALS MADE	1	at Missouri (12/7/10)
	4	at Southern Illinois (11/12/10)
3 PT FG ATTEMPTS	13	at Air Force (11/23/10)
	14	at Colorado (11/21/10)
	14	at Missouri (12/7/10)
3 PT FG PERCENTAGE	.071 (1-14)	at Missouri (12/7/10)
	.160 (4-25)	at Southern Illinois (11/12/10)
FREE THROWS MADE	5	at BELMONT (11-17-10)
	6	at Vanderbilt (12/09/10)
FREE THROW ATTEMPTS	8	at BELMONT (11-17-10)
	10	at Vanderbilt (12/09/10)
FREE THROW PERCENTAGE	.526 (10-19)	at Missouri (12/7/10)
	.600 (6-10)	at Vanderbilt (12/09/10)
	.600 (12-20)	at Southern Illinois (11/12/10)
REBOUNDS	31	at BELMONT (11-17-10)
	34	at Eastern Kentucky University (12/04/10)
ASSISTS	6	at Eastern Kentucky University (12/04/10)
	9	at Southern Illinois (11/12/10)
	9	at Missouri (12/7/10)
STEALS	3	at Eastern Kentucky University (12/04/10)
	6	at Indiana State (11-14-10)
	6	at BELMONT (11-17-10)
	6	at Vanderbilt (12/09/10)
BLOCKED SHOTS	1	at BELMONT (11-17-10)
	2	at Colorado (11/21/10)
TURNOVERS	10	at Eastern Kentucky University (12/04/10)
	12	at Vanderbilt (12/09/10)
FOULS	7	at Missouri (12/7/10)
	16	at BELMONT (11-17-10)
	16	at Eastern Kentucky University (12/04/10)

## ***2010-11 UTM INDIVIDUAL GAME-HIGHS***

Points	31		BUTLER, Heather at Morehead State (12/2/10)
	28		NEWSOME, Jasmine at Air Force (11/23/10)
	28		BUTLER, Heather at Air Force (11/23/10)
	24		NEWSOME, Jasmine at Southern Illinois (11/12/10)
	20		BUTLER, Heather at Vanderbilt (12/09/10)
	20		NEWSOME, Jasmine at Eastern Kentucky University (12/04/10)
Field Goals Made	9		BUTLER, Heather at Air Force (11/23/10)
	8		BUTLER, Heather at Morehead State (12/2/10)
	8		NEWSOME, Jasmine at Air Force (11/23/10)
Field Goal Att.	21		BUTLER, Heather at Morehead State (12/2/10)
	20		NEWSOME, Jasmine at Missouri (12/7/10)
	20		BUTLER, Heather at Southern Illinois (11/12/10)
	20		NEWSOME, Jasmine at Southern Illinois (11/12/10)
FG Pct (min 5 made)	.714	(5-7)	NEWSOME, Jasmine at Colorado (11/21/10)
	.700	(7-10)	HAISLIP, Jaclissa at Vanderbilt (12/09/10)
3-Point FG Made	5		HAISLIP, Jaclissa at BELMONT (11-17-10)
	4		BUTLER, Heather at Air Force (11/23/10)
	4		NEWSOME, Jasmine at Southern Illinois (11/12/10)
3-Point FG Att.	10		BUTLER, Heather at Missouri (12/7/10)
	10		BUTLER, Heather at Air Force (11/23/10)
	10		HAISLIP, Jaclissa at BELMONT (11-17-10)
	10		BUTLER, Heather at BELMONT (11-17-10)
	10		NEWSOME, Jasmine at Southern Illinois (11/12/10)
3-Pt FG Pct (min 2 made)	.750	(3-4)	BUTLER, Heather at Eastern Kentucky University (12/04/10)
	.600	(3-5)	HAISLIP, Jaclissa at Vanderbilt (12/09/10)
Free Throws Made	12		BUTLER, Heather at Morehead State (12/2/10)
	11		NEWSOME, Jasmine at Air Force (11/23/10)
Free Throw Att.	15		BUTLER, Heather at Morehead State (12/2/10)
	14		NEWSOME, Jasmine at Air Force (11/23/10)
FT Pct (min 3 made)	1.000	(4-4)	BUTLER, Heather at Vanderbilt (12/09/10)
	1.000	(4-4)	HALL, Taylor at Eastern Kentucky University (12/04/10)
	1.000	(4-4)	BUTLER, Heather at BELMONT (11-17-10)
Rebounds	11		HAISLIP, Jaclissa at Morehead State (12/2/10)
	11		HAISLIP, Jaclissa at BELMONT (11-17-10)
Assists	7		BUTLER, Heather at BELMONT (11-17-10)
	5		NEWSOME, Jasmine at Air Force (11/23/10)
Steals	5		NEWSOME, Jasmine at Missouri (12/7/10)
	4		HAISLIP, Jaclissa at Indiana State (11-14-10)
Blocked Shots	3		HAWN, Beth at Morehead State (12/2/10)
	2		BRYANT, Rickiesha at Morehead State (12/2/10)
	2		NEWSOME, Jasmine at Morehead State (12/2/10)
	2		BRYANT, Rickiesha at Air Force (11/23/10)
	2		HAWN, Beth at BELMONT (11-17-10)
	2		BRYANT, Rickiesha at BELMONT (11-17-10)
Turnovers	6		NEWSOME, Jasmine at Morehead State (12/2/10)
	6		NEWSOME, Jasmine at Air Force (11/23/10)
Fouls	5		WEATHERLY, Alecia at Vanderbilt (12/09/10)
	5		BRYANT, Rickiesha at Morehead State (12/2/10)
	5		HALL, Taylor at Morehead State (12/2/10)
	5		HAISLIP, Jaclissa at Morehead State (12/2/10)

# 2010-11 OPPONENT INDIVIDUAL GAME-HIGHS

Points	31		BOZEMAN, Chynna at Morehead State (12/2/10)
	25		Jeffery, Chucky at Colorado (11/21/10)
	24		HARRIS, Ashar at Morehead State (12/2/10)
	20		Spears, Brittany at Colorado (11/21/10)
	20		Schoen, Brittany at Indiana State (11-14-10)
Field Goals Made	10		HARRIS, Ashar at Morehead State (12/2/10)
	10		Jeffery, Chucky at Colorado (11/21/10)
Field Goal Att.	18		ERNST, Molly at BELMONT (11-17-10)
	18		Teri Oliver at Southern Illinois (11/12/10)
FG Pct (min 5 made)	1.000	(7-7)	TUOMI, Hannah at Vanderbilt (12/09/10)
	.778	(7-9)	Crafton, Sydney at Missouri (12/7/10)
3-Point FG Made	5		ERNST, Molly at BELMONT (11-17-10)
	5		Schoen, Brittany at Indiana State (11-14-10)
3-Point FG Att.	15		ERNST, Molly at BELMONT (11-17-10)
	15		Teri Oliver at Southern Illinois (11/12/10)
3-Pt FG Pct (min 2 made)	1.000	(3-3)	BERGER, Kelsey at Air Force (11/23/10)
	.667	(2-3)	Jeffery, Chucky at Colorado (11/21/10)
Free Throws Made	18		BOZEMAN, Chynna at Morehead State (12/2/10)
	10		TURNER, Allie at Morehead State (12/2/10)
Free Throw Att.	20		BOZEMAN, Chynna at Morehead State (12/2/10)
	12		TURNER, Allie at Morehead State (12/2/10)
FT Pct (min 3 made)	1.000	(6-6)	JONES, Alex at Eastern Kentucky University (12/04/10)
	1.000	(4-4)	COLES, Brittany at Eastern Kentucky University (12/04/10)
	1.000	(4-4)	BOAL, Caitlin at Air Force (11/23/10)
	1.000	(3-3)	Brown, RaeShara at Missouri (12/7/10)
	1.000	(3-3)	BECK, Raimee at Air Force (11/23/10)
	1.000	(3-3)	Wilson, Ashley at Colorado (11/21/10)
	1.000	(3-3)	Schoen, Brittany at Indiana State (11-14-10)
Rebounds	13		TUOMI, Hannah at Vanderbilt (12/09/10)
	12		Spears, Brittany at Colorado (11/21/10)
Assists	9		RHOADS, Jence at Vanderbilt (12/09/10)
	9		BOZEMAN, Chynna at Morehead State (12/2/10)
	9		LEIPPRANDT, Alicia at Air Force (11/23/10)
	9		Whitley, Taylor at Indiana State (11-14-10)
Steals	5		Whitley, Taylor at Indiana State (11-14-10)
	4		Crafton, Sydney at Missouri (12/7/10)
	4		HARRIS, Ashar at Morehead State (12/2/10)
	4		Jeffery, Chucky at Colorado (11/21/10)
	4		Brooke LeMar at Southern Illinois (11/12/10)
Blocked Shots	7		Flores, Christine at Missouri (12/7/10)
	3		Jones, Shakara at Missouri (12/7/10)
	3		DIXON, Linda at Morehead State (12/2/10)
Turnovers	6		Flores, Christine at Missouri (12/7/10)
	5		Brown, RaeShara at Missouri (12/7/10)
	5		LEIPPRANDT, Alicia at Air Force (11/23/10)
Fouls	5		BROWN, Elan at Vanderbilt (12/09/10)
	5		LUMPKIN, Courtney at Morehead State (12/2/10)
	5		Hodge, Moriah at Indiana State (11-14-10)
	5		Katrina Swingler at Southern Illinois (11/12/10)

# UTM INDIVIDUAL GAME-BY-GAME

## #05 MINTER, Matrekia

Opponent	Date	gs	min	Total		3-Pointers		Free throws		Rebounds				pf	a	t/o	blk	stl	pts	avg
				fg-fga	pct	3fg-fga	pct	ft-fta	pct	off	def	tot	avg							
at Indiana State	11-14-10		0	0-0	.000	0-0	.000	0-0	.000	0	0	0	0.0	1	0	0	0	0	0	0.0
at BELMONT	11-17-10		1	0-1	.000	0-0	.000	0-0	.000	0	0	0	0.0	0	0	0	0	0	0	0.0
at Morehead State	12/2/10		2	0-0	.000	0-0	.000	0-0	.000	0	0	0	0.0	0	0	0	0	0	0	0.0
<b>Totals</b>			<b>0</b>	<b>0-1</b>	<b>.000</b>	<b>0-0</b>	<b>.000</b>	<b>0-0</b>	<b>.000</b>	<b>0</b>	<b>0</b>	<b>0</b>	<b>0.0</b>	<b>1</b>	<b>0</b>	<b>0</b>	<b>0</b>	<b>0</b>	<b>0</b>	<b>0.0</b>

Games played: 3  
 Minutes/game: 1.0  
 FG Pct: 0.0

## #11 BUTLER, Heather

Opponent	Date	gs	min	Total		3-Pointers		Free throws		Rebounds				pf	a	t/o	blk	stl	pts	avg	
				fg-fga	pct	3fg-fga	pct	ft-fta	pct	off	def	tot	avg								
at Southern Illinois	11/12/10	*	29	6-20	.300	1-7	.143	0-1	.000	4	1	5	5.0	0	1	5	0	0	13	13.0	
at Indiana State	11-14-10	*	37	4-14	.286	2-7	.286	8-10	.800	3	1	4	4.5	0	4	2	0	1	18	15.5	
at BELMONT	11-17-10	*	34	6-15	.400	3-10	.300	4-4	1.000	1	5	6	5.0	0	7	0	0	0	19	16.7	
at Colorado	11/21/10	*	39	5-14	.357	2-5	.400	6-8	.750	2	5	7	5.5	1	3	5	0	3	18	17.0	
at Air Force	11/23/10	*	38	9-17	.529	4-10	.400	6-7	.857	0	3	3	5.0	3	3	1	0	2	28	19.2	
at Morehead State	12/2/10	*	40	8-21	.381	3-9	.333	12-15	.800	1	5	6	5.2	3	3	2	0	1	31	21.2	
at Eastern Kentucky Univer	12/04/10	*	40	6-15	.400	3-4	.750	0-0	.000	1	2	3	4.9	1	2	1	0	0	15	20.3	
at Missouri	12/7/10	*	40	4-18	.222	2-10	.200	2-2	1.000	1	2	3	4.6	3	1	5	0	1	12	19.3	
at Vanderbilt	12/09/10	*	40	7-17	.412	2-8	.250	4-4	1.000	0	5	5	4.7	1	1	2	0	1	20	19.3	
<b>Totals</b>			<b>9</b>	<b>337</b>	<b>55-151</b>	<b>.364</b>	<b>22-70</b>	<b>.314</b>	<b>42-51</b>	<b>.824</b>	<b>13</b>	<b>29</b>	<b>42</b>	<b>4.7</b>	<b>12</b>	<b>25</b>	<b>23</b>	<b>0</b>	<b>9</b>	<b>174</b>	<b>19.3</b>

Games played: 9  
 Minutes/game: 37.4  
 Points/game: 19.3  
 FG Pct: 36.4  
 3FG Pct: 31.4  
 FT Pct: 82.4

Rebounds/game: 4.7  
 Assists/game: 2.8  
 Turnovers/game: 2.6  
 Assist/turnover ratio: 1.1  
 Steals/game: 1.0

## #12 NEWSOME, Jasmine

Opponent	Date	gs	min	Total		3-Pointers		Free throws		Rebounds				pf	a	t/o	blk	stl	pts	avg	
				fg-fga	pct	3fg-fga	pct	ft-fta	pct	off	def	tot	avg								
at Southern Illinois	11/12/10	*	39	7-20	.350	4-10	.400	6-7	.857	2	4	6	6.0	2	1	4	0	2	24	24.0	
at Indiana State	11-14-10	*	33	5-19	.263	2-8	.250	2-2	1.000	1	2	3	4.5	4	2	2	0	1	14	19.0	
at BELMONT	11-17-10	*	11	3-8	.375	0-4	.000	0-0	.000	0	0	0	3.0	3	0	4	0	0	6	14.7	
at Colorado	11/21/10	*	20	5-7	.714	0-2	.000	2-4	.500	0	0	0	2.3	2	3	2	1	1	12	14.0	
at Air Force	11/23/10	*	36	8-14	.571	1-4	.250	11-14	.786	0	4	4	2.6	0	5	6	0	2	28	16.8	
at Morehead State	12/2/10	*	34	6-12	.500	0-3	.000	6-10	.600	0	4	4	2.8	4	0	6	2	3	18	17.0	
at Eastern Kentucky Univer	12/04/10	*	32	6-15	.400	2-5	.400	6-8	.750	1	7	8	3.6	4	4	5	0	1	20	17.4	
at Missouri	12/7/10	*	37	4-20	.200	1-3	.333	0-0	.000	3	4	7	4.0	4	1	5	0	5	9	16.4	
at Vanderbilt	12/09/10	*	40	6-19	.316	0-1	.000	5-6	.833	2	1	3	3.9	1	3	4	0	2	17	16.4	
<b>Totals</b>			<b>9</b>	<b>282</b>	<b>50-134</b>	<b>.373</b>	<b>10-40</b>	<b>.250</b>	<b>38-51</b>	<b>.745</b>	<b>9</b>	<b>26</b>	<b>35</b>	<b>3.9</b>	<b>24</b>	<b>19</b>	<b>38</b>	<b>3</b>	<b>17</b>	<b>148</b>	<b>16.4</b>

Games played: 9  
 Minutes/game: 31.3  
 Points/game: 16.4  
 FG Pct: 37.3  
 3FG Pct: 25.0  
 FT Pct: 74.5

Rebounds/game: 3.9  
 Assists/game: 2.1  
 Turnovers/game: 4.2  
 Assist/turnover ratio: 0.5  
 Steals/game: 1.9  
 Blocks/game: 0.3

# UTM INDIVIDUAL GAME-BY-GAME

## #14 HALL, Taylor

Opponent	Date	gs	min	Total		3-Pointers		Free throws		Rebounds				pf	a	t/o	blk	stl	pts	avg
				fg-fga	pct	3fg-fga	pct	ft-fta	pct	off	def	tot	avg							
at Southern Illinois	11/12/10		8	0-1	.000	0-1	.000	0-0	.000	0	3	3	3.0	3	0	1	0	0	0	0.0
at Indiana State	11-14-10		15	0-1	.000	0-1	.000	0-0	.000	1	0	1	2.0	2	3	0	0	1	0	0.0
at BELMONT	11-17-10		32	3-9	.333	3-9	.333	2-2	1.000	1	3	4	2.7	1	4	3	0	2	11	3.7
at Colorado	11/21/10		19	0-3	.000	0-3	.000	1-2	.500	0	1	1	2.3	4	4	3	0	1	1	3.0
at Air Force	11/23/10		23	1-3	.333	1-3	.333	0-0	.000	0	1	1	2.0	4	3	0	0	1	3	3.0
at Morehead State	12/2/10		16	0-3	.000	0-2	.000	0-0	.000	0	1	1	1.8	5	1	1	0	0	0	2.5
at Eastern Kentucky Univer	12/04/10		22	1-6	.167	1-6	.167	4-4	1.000	0	5	5	2.3	1	0	1	0	1	7	3.1
at Missouri	12/7/10		16	0-2	.000	0-2	.000	0-0	.000	1	4	5	2.6	1	0	1	0	1	0	2.8
at Vanderbilt	12/09/10	*	34	1-8	.125	0-7	.000	0-0	.000	2	5	7	3.1	3	3	4	0	1	2	2.7
Totals		1	185	6-36	.167	5-34	.147	7-8	.875	5	23	28	3.1	24	18	14	0	8	24	2.7

Games played: 9  
 Minutes/game: 20.6  
 Points/game: 2.7  
 FG Pct: 16.7  
 3FG Pct: 14.7  
 FT Pct: 87.5

Rebounds/game: 3.1  
 Assists/game: 2.0  
 Turnovers/game: 1.6  
 Assist/turnover ratio: 1.3  
 Steals/game: 0.9

## #15 SWAIM, Grace Ann

Opponent	Date	gs	min	Total		3-Pointers		Free throws		Rebounds				pf	a	t/o	blk	stl	pts	avg
				fg-fga	pct	3fg-fga	pct	ft-fta	pct	off	def	tot	avg							
at Indiana State	11-14-10		1	0-1	.000	0-0	.000	1-2	.500	0	0	0	0.0	1	0	0	0	0	1	1.0
at BELMONT	11-17-10		4	0-1	.000	0-1	.000	0-0	.000	1	1	2	1.0	0	0	1	0	0	0	0.5
at Colorado	11/21/10		2	0-0	.000	0-0	.000	0-0	.000	0	0	0	0.7	1	0	1	0	0	0	0.3
at Air Force	11/23/10		3	0-1	.000	0-0	.000	0-0	.000	0	0	0	0.5	0	0	1	0	1	0	0.3
at Morehead State	12/2/10		5	1-1	1.000	0-0	.000	0-0	.000	1	2	3	1.0	1	0	0	0	0	2	0.6
at Eastern Kentucky Univer	12/04/10		6	0-0	.000	0-0	.000	0-0	.000	0	1	1	1.0	0	0	0	0	0	0	0.5
Totals		0	21	1-4	.250	0-1	.000	1-2	.500	2	4	6	1.0	3	0	3	0	1	3	0.5

Games played: 6  
 Minutes/game: 3.5  
 Points/game: 0.5  
 FG Pct: 25.0  
 3FG Pct: 0.0  
 FT Pct: 50.0

Rebounds/game: 1.0  
 Turnovers/game: 0.5  
 Steals/game: 0.2

## #20 HAISLIP, Jaclissa

Opponent	Date	gs	min	Total		3-Pointers		Free throws		Rebounds				pf	a	t/o	blk	stl	pts	avg
				fg-fga	pct	3fg-fga	pct	ft-fta	pct	off	def	tot	avg							
at Southern Illinois	11/12/10	*	34	0-4	.000	0-2	.000	0-2	.000	3	6	9	9.0	4	3	1	1	3	0	0.0
at Indiana State	11-14-10	*	36	4-8	.500	1-4	.250	3-6	.500	2	4	6	7.5	3	2	0	0	4	12	6.0
at BELMONT	11-17-10	*	37	6-11	.545	5-10	.500	0-0	.000	3	8	11	8.7	1	1	1	1	2	17	9.7
at Colorado	11/21/10	*	39	6-14	.429	3-8	.375	2-2	1.000	4	6	10	9.0	4	1	1	0	2	17	11.5
at Air Force	11/23/10	*	34	7-18	.389	3-6	.500	0-0	.000	5	4	9	9.0	1	0	3	0	2	17	12.6
at Morehead State	12/2/10	*	24	3-12	.250	1-5	.200	0-0	.000	1	10	11	9.3	5	2	4	1	0	7	11.7
at Eastern Kentucky Univer	12/04/10	*	19	0-2	.000	0-1	.000	0-0	.000	0	4	4	8.6	1	0	1	0	0	0	10.0
at Missouri	12/7/10	*	32	1-7	.143	1-4	.250	0-0	.000	3	4	7	8.4	2	0	2	0	0	3	9.1
at Vanderbilt	12/09/10	*	40	7-10	.700	3-5	.600	2-2	1.000	2	3	5	8.0	3	0	2	0	0	19	10.2
Totals		9	295	34-86	.395	17-45	.378	7-12	.583	23	49	72	8.0	24	9	15	3	13	92	10.2

Games played: 9  
 Minutes/game: 32.8  
 Points/game: 10.2  
 FG Pct: 39.5  
 3FG Pct: 37.8  
 FT Pct: 58.3

Rebounds/game: 8.0  
 Assists/game: 1.0  
 Turnovers/game: 1.7  
 Assist/turnover ratio: 0.6  
 Steals/game: 1.4  
 Blocks/game: 0.3

# UTM INDIVIDUAL GAME-BY-GAME

## #22 WEATHERLY, Alecia

Opponent	Date	gs	min	Total		3-Pointers		Free throws		Rebounds				pf	a	t/o	blk	stl	pts	avg	
				fg-fga	pct	3fg-fga	pct	ft-fta	pct	off	def	tot	avg								
at Southern Illinois	11/12/10		0	0-1	.000	0-1	.000	0-0	.000	0	0	0	0.0	0	0	0	0	0	0	0.0	
at BELMONT	11-17-10		15	2-3	.667	0-0	.000	3-4	.750	3	5	8	4.0	1	1	1	0	0	7	3.5	
at Colorado	11/21/10		23	1-2	.500	1-1	1.000	4-5	.800	1	2	3	3.7	3	0	1	0	1	7	4.7	
at Air Force	11/23/10	*	24	1-2	.500	1-1	1.000	6-8	.750	1	3	4	3.8	3	3	1	0	3	9	5.8	
at Morehead State	12/2/10	*	18	1-3	.333	0-1	.000	2-4	.500	1	0	1	3.2	1	0	0	0	0	4	5.4	
at Eastern Kentucky Univer	12/04/10	*	24	0-1	.000	0-0	.000	2-2	1.000	1	4	5	3.5	0	0	2	0	1	2	4.8	
at Missouri	12/7/10	*	11	0-0	.000	0-0	.000	0-0	.000	0	1	1	3.1	2	0	0	0	0	0	4.1	
at Vanderbilt	12/09/10	*	17	0-0	.000	0-0	.000	0-0	.000	0	0	0	2.8	5	0	1	0	0	0	3.6	
Totals			5	132	5-12	.417	2-4	.500	17-23	.739	7	15	22	2.8	15	4	6	0	5	29	3.6

Games played: 8  
 Minutes/game: 16.5  
 Points/game: 3.6  
 FG Pct: 41.7  
 3FG Pct: 50.0  
 FT Pct: 73.9

Rebounds/game: 2.8  
 Assists/game: 0.5  
 Turnovers/game: 0.8  
 Assist/turnover ratio: 0.7  
 Steals/game: 0.6

## #32 WHITE, Megan

Opponent	Date	gs	min	Total		3-Pointers		Free throws		Rebounds				pf	a	t/o	blk	stl	pts	avg	
				fg-fga	pct	3fg-fga	pct	ft-fta	pct	off	def	tot	avg								
at Southern Illinois	11/12/10		1	0-0	.000	0-0	.000	0-0	.000	0	0	0	0.0	0	0	0	0	0	0	0.0	
at Indiana State	11-14-10		0	0-0	.000	0-0	.000	0-0	.000	0	1	1	0.5	0	0	0	0	0	0	0.0	
at BELMONT	11-17-10		1	0-0	.000	0-0	.000	0-0	.000	0	1	1	0.7	0	0	0	0	0	0	0.0	
at Colorado	11/21/10		6	1-2	.500	1-2	.500	0-0	.000	0	1	1	0.8	0	0	1	0	0	3	0.8	
at Air Force	11/23/10		1	0-0	.000	0-0	.000	0-0	.000	0	0	0	0.6	0	0	1	0	0	0	0.6	
at Morehead State	12/2/10		2	1-1	1.000	1-1	1.000	0-0	.000	0	0	0	0.5	1	0	1	0	0	3	1.0	
at Eastern Kentucky Univer	12/04/10		1	1-1	1.000	0-0	.000	0-0	.000	1	0	1	0.6	0	0	0	0	0	2	1.1	
at Vanderbilt	12/09/10		3	0-1	.000	0-1	.000	0-0	.000	0	0	0	0.5	0	0	0	0	0	0	1.0	
Totals			0	15	3-5	.600	2-4	.500	0-0	.000	1	3	4	0.5	1	0	3	0	0	8	1.0

## #33 BRYANT, Rickiesha

Opponent	Date	gs	min	Total		3-Pointers		Free throws		Rebounds				pf	a	t/o	blk	stl	pts	avg	
				fg-fga	pct	3fg-fga	pct	ft-fta	pct	off	def	tot	avg								
at Southern Illinois	11/12/10		8	1-2	.500	0-0	.000	0-0	.000	1	0	1	1.0	3	0	0	1	0	2	2.0	
at Indiana State	11-14-10		11	0-1	.000	0-0	.000	1-2	.500	3	3	6	3.5	2	0	1	1	1	1	1.5	
at BELMONT	11-17-10		10	0-2	.000	0-0	.000	1-2	.500	1	2	3	3.3	2	0	1	2	2	1	1.3	
at Colorado	11/21/10		8	1-1	1.000	0-0	.000	1-2	.500	0	0	0	2.5	1	0	0	0	0	3	1.8	
at Air Force	11/23/10		9	0-0	.000	0-0	.000	0-0	.000	0	4	4	2.8	2	0	0	2	0	0	1.4	
at Morehead State	12/2/10		11	2-4	.500	0-0	.000	0-0	.000	1	4	5	3.2	5	0	1	2	0	4	1.8	
at Missouri	12/7/10		6	0-0	.000	0-0	.000	0-0	.000	1	0	1	2.9	1	0	1	0	0	0	1.6	
Totals			0	63	4-10	.400	0-0	.000	3-6	.500	7	13	20	2.9	16	0	4	8	3	11	1.6

Games played: 7  
 Minutes/game: 9.0  
 Points/game: 1.6  
 FG Pct: 40.0  
 FT Pct: 50.0

Rebounds/game: 2.9  
 Turnovers/game: 0.6  
 Steals/game: 0.4  
 Blocks/game: 1.1

# UTM INDIVIDUAL GAME-BY-GAME

## #34 CRAWFORD, Shelby

Opponent	Date	gs	min	Total		3-Pointers		Free throws		Rebounds				pf	a	t/o	blk	stl	pts	avg
				fg-fga	pct	3fg-fga	pct	ft-fta	pct	off	def	tot	avg							
at Southern Illinois	11/12/10		19	1-1	1.000	0-0	.000	2-6	.333	2	1	3	3.0	0	0	2	0	0	4	4.0
at Indiana State	11-14-10		20	1-4	.250	0-0	.000	2-2	1.000	2	4	6	4.5	1	0	3	0	1	4	4.0
at BELMONT	11-17-10		8	1-2	.500	0-0	.000	0-0	.000	1	1	2	3.7	2	1	0	0	0	2	3.3
at Colorado	11/21/10		9	0-2	.000	0-1	.000	1-2	.500	1	3	4	3.8	2	0	1	0	0	1	2.8
at Air Force	11/23/10		9	0-0	.000	0-0	.000	0-0	.000	0	0	0	3.0	3	0	1	0	0	0	2.2
at Morehead State	12/2/10		14	1-5	.200	0-1	.000	1-2	.500	4	1	5	3.3	2	1	3	0	1	3	2.3
at Eastern Kentucky Univer	12/04/10		15	0-2	.000	0-0	.000	0-0	.000	1	2	3	3.3	2	0	1	0	1	0	2.0
at Missouri	12/7/10		29	1-3	.333	0-0	.000	0-2	.000	1	2	3	3.3	2	0	0	0	2	2	2.0
at Vanderbilt	12/09/10		4	0-0	.000	0-0	.000	1-2	.500	1	1	2	3.1	0	0	1	0	0	1	1.9
<b>Totals</b>		<b>0</b>	<b>127</b>	<b>5-19</b>	<b>.263</b>	<b>0-2</b>	<b>.000</b>	<b>7-16</b>	<b>.438</b>	<b>13</b>	<b>15</b>	<b>28</b>	<b>3.1</b>	<b>14</b>	<b>2</b>	<b>12</b>	<b>0</b>	<b>5</b>	<b>17</b>	<b>1.9</b>

Games played: 9  
 Minutes/game: 14.1  
 Points/game: 1.9  
 FG Pct: 26.3  
 3FG Pct: 0.0  
 FT Pct: 43.8

Rebounds/game: 3.1  
 Assists/game: 0.2  
 Turnovers/game: 1.3  
 Assist/turnover ratio: 0.2  
 Steals/game: 0.6

## #40 GLENN, Perica

Opponent	Date	gs	min	Total		3-Pointers		Free throws		Rebounds				pf	a	t/o	blk	stl	pts	avg
				fg-fga	pct	3fg-fga	pct	ft-fta	pct	off	def	tot	avg							
at Southern Illinois	11/12/10		5	0-2	.000	0-0	.000	0-0	.000	1	0	1	1.0	1	0	3	0	1	0	0.0
at Indiana State	11-14-10		2	0-0	.000	0-0	.000	0-0	.000	0	0	0	0.5	0	0	1	0	0	0	0.0
at BELMONT	11-17-10		4	2-2	1.000	0-0	.000	0-1	.000	1	0	1	0.7	0	0	2	0	0	4	1.3
at Colorado	11/21/10		4	1-1	1.000	0-0	.000	0-0	.000	0	1	1	0.8	0	0	1	0	0	2	1.5
at Air Force	11/23/10		6	1-2	.500	0-0	.000	0-0	.000	3	1	4	1.4	2	0	0	1	0	2	1.6
at Morehead State	12/2/10		0	0-1	.000	0-0	.000	0-0	.000	1	0	1	1.3	0	1	0	0	0	0	1.3
at Eastern Kentucky Univer	12/04/10		12	2-2	1.000	0-0	.000	0-0	.000	1	2	3	1.6	4	1	1	1	1	4	1.7
at Missouri	12/7/10		5	0-1	.000	0-0	.000	0-0	.000	0	0	0	1.4	1	0	1	0	0	0	1.5
<b>Totals</b>		<b>0</b>	<b>38</b>	<b>6-11</b>	<b>.545</b>	<b>0-0</b>	<b>.000</b>	<b>0-1</b>	<b>.000</b>	<b>7</b>	<b>4</b>	<b>11</b>	<b>1.4</b>	<b>8</b>	<b>2</b>	<b>9</b>	<b>2</b>	<b>2</b>	<b>12</b>	<b>1.5</b>

Games played: 8  
 Minutes/game: 4.8  
 Points/game: 1.5  
 FG Pct: 54.5  
 FT Pct: 0.0

Rebounds/game: 1.4  
 Assists/game: 0.3  
 Turnovers/game: 1.1  
 Assist/turnover ratio: 0.2  
 Steals/game: 0.3  
 Blocks/game: 0.3

## #42 HAWN, Beth

Opponent	Date	gs	min	Total		3-Pointers		Free throws		Rebounds				pf	a	t/o	blk	stl	pts	avg
				fg-fga	pct	3fg-fga	pct	ft-fta	pct	off	def	tot	avg							
at Southern Illinois	11/12/10	*	32	6-10	.600	1-1	1.000	1-3	.333	1	6	7	7.0	3	0	1	1	1	14	14.0
at Indiana State	11-14-10	*	34	6-12	.500	0-1	.000	0-0	.000	4	6	10	8.5	3	1	3	0	1	12	13.0
at BELMONT	11-17-10	*	26	2-4	.500	0-0	.000	0-0	.000	1	3	4	7.0	3	0	2	2	1	4	10.0
at Colorado	11/21/10	*	21	1-4	.250	0-1	.000	1-2	.500	2	1	3	6.0	4	0	2	0	0	3	8.3
at Air Force	11/23/10	*	11	1-5	.200	0-0	.000	0-2	.000	2	1	3	5.4	4	0	2	0	0	2	7.0
at Morehead State	12/2/10	*	17	2-7	.286	0-0	.000	2-2	1.000	5	3	8	5.8	0	0	2	3	0	6	6.8
at Eastern Kentucky Univer	12/04/10	*	17	4-6	.667	1-1	1.000	2-2	1.000	1	4	5	5.7	4	0	0	0	1	11	7.4
at Missouri	12/7/10	*	19	1-6	.167	0-0	.000	2-3	.667	1	3	4	5.5	0	0	2	0	1	4	7.0
at Vanderbilt	12/09/10		3	0-0	.000	0-0	.000	0-0	.000	0	1	1	5.0	0	0	1	0	0	0	6.2
<b>Totals</b>		<b>8</b>	<b>180</b>	<b>23-54</b>	<b>.426</b>	<b>2-4</b>	<b>.500</b>	<b>8-14</b>	<b>.571</b>	<b>17</b>	<b>28</b>	<b>45</b>	<b>5.0</b>	<b>21</b>	<b>1</b>	<b>15</b>	<b>6</b>	<b>5</b>	<b>56</b>	<b>6.2</b>

Games played: 9  
 Minutes/game: 20.0  
 Points/game: 6.2  
 FG Pct: 42.6  
 3FG Pct: 50.0  
 FT Pct: 57.1

Rebounds/game: 5.0  
 Assists/game: 0.1  
 Turnovers/game: 1.7  
 Assist/turnover ratio: 0.1  
 Steals/game: 0.6  
 Blocks/game: 0.7

# UTM INDIVIDUAL GAME-BY-GAME

#45 REEDY, Aubrey

Opponent	Date	gs	min	Total		3-Pointers		Free throws		Rebounds				pf	a	t/o	blk	stl	pts	avg	
				fg-fga	pct	3fg-fga	pct	ft-fa	pct	off	def	tot	avg								
at Southern Illinois	11/12/10	*	25	2-5	.400	1-1	1.000	0-2	.000	5	1	6	6.0	2	0	2	1	2	5	5.0	
at Indiana State	11-14-10	*	10	0-0	.000	0-0	.000	0-0	.000	1	2	3	4.5	3	1	1	0	0	0	2.5	
at BELMONT	11-17-10	*	16	1-3	.333	0-0	.000	0-0	.000	2	2	4	4.3	1	0	0	0	0	2	2.3	
at Colorado	11/21/10	*	10	0-2	.000	0-1	.000	0-0	.000	0	1	1	3.5	1	2	1	0	1	0	1.8	
at Air Force	11/23/10		6	0-0	.000	0-0	.000	2-2	1.000	1	0	1	3.0	0	0	1	0	0	2	1.8	
at Morehead State	12/2/10		17	2-6	.333	0-1	.000	0-0	.000	1	0	1	2.7	3	1	1	0	1	4	2.2	
at Eastern Kentucky Univer	12/04/10		12	0-1	.000	0-1	.000	0-0	.000	0	0	0	2.3	1	0	0	0	0	0	1.9	
at Missouri	12/7/10		5	0-2	.000	0-2	.000	0-0	.000	0	0	0	2.0	3	0	1	0	1	0	1.6	
at Vanderbilt	12/09/10		19	0-1	.000	0-0	.000	1-2	.500	3	2	5	2.3	1	0	0	0	0	1	1.6	
Totals			4	120	5-20	.250	1-6	.167	3-6	.500	13	8	21	2.3	15	4	7	1	5	14	1.6

Games played: 9  
 Minutes/game: 13.3  
 Points/game: 1.6  
 FG Pct: 25.0  
 3FG Pct: 16.7  
 FT Pct: 50.0

Rebounds/game: 2.3  
 Assists/game: 0.4  
 Turnovers/game: 0.8  
 Assist/turnover ratio: 0.6  
 Steals/game: 0.6  
 Blocks/game: 0.1

# 2010-11 SKYHAWK STATS

RECORD:	OVERALL	HOME	AWAY	NEUTRAL
ALL GAMES	4-5	0-0	4-5	0-0
CONFERENCE	1-1	0-0	1-1	0-0
NON-CONFERENCE	3-4	0-0	3-4	0-0

#	Player	gp-gs	min	avg	Total		3-Point		F-Throw		Rebounds			pf	dq	a	to	blk	stl	pts	avg	
					fg-fga	fg%	3fg-fga	3fg%	ft-fta	ft%	off	def	tot									avg
11	BUTLER, Heather	9-9	337	37.4	55-151	.364	22-70	.314	42-51	.824	13	29	42	4.7	12	0	25	23	0	9	174	19.3
12	NEWSOME, Jasmine	9-9	282	31.3	50-134	.373	10-40	.250	38-51	.745	9	26	35	3.9	24	0	19	38	3	17	148	16.4
20	HAISLIP, Jaclissa	9-9	295	32.8	34-86	.395	17-45	.378	7-12	.583	23	49	72	8.0	24	1	9	15	3	13	92	10.2
42	HAWN, Beth	9-8	180	20.0	23-54	.426	2-4	.500	8-14	.571	17	28	45	5.0	21	0	1	15	6	5	56	6.2
22	WEATHERLY, Alecia	8-5	132	16.5	5-12	.417	2-4	.500	17-23	.739	7	15	22	2.8	15	1	4	6	0	5	29	3.6
14	HALL, Taylor	9-1	185	20.6	6-36	.167	5-34	.147	7-8	.875	5	23	28	3.1	24	1	18	14	0	8	24	2.7
34	CRAWFORD, Shelby	9-0	127	14.1	5-19	.263	0-2	.000	7-16	.438	13	15	28	3.1	14	0	2	12	0	5	17	1.9
33	BRYANT, Rickiesha	7-0	63	9.0	4-10	.400	0-0	.000	3-6	.500	7	13	20	2.9	16	1	0	4	8	3	11	1.6
45	REEDY, Aubrey	9-4	120	13.3	5-20	.250	1-6	.167	3-6	.500	13	8	21	2.3	15	0	4	7	1	5	14	1.6
40	GLENN, Perica	8-0	38	4.8	6-11	.545	0-0	.000	0-1	.000	7	4	11	1.4	8	0	2	9	2	2	12	1.5
32	WHITE, Megan	8-0	15	1.9	3-5	.600	2-4	.500	0-0	.000	1	3	4	0.5	1	0	0	3	0	0	8	1.0
15	SWAIM, Grace Ann	6-0	21	3.5	1-4	.250	0-1	.000	1-2	.500	2	4	6	1.0	3	0	0	3	0	1	3	0.5
05	MINTER, Matrekia	3-0	3	1.0	0-1	.000	0-0	.000	0-0	.000	0	0	0	0.0	1	0	0	0	0	0	0	0.0
00	GLISSON, Erica	2-0	2	1.0	0-0	.000	0-0	.000	0-0	.000	0	0	0	0.0	0	0	0	1	0	0	0	0.0
Team																						
Total.....		9	1800		197-543	.363	61-210	.290	133-190	.700	133	237	370	41.1	180	4	84	155	23	73	588	65.3
Opponents.....		9	1800		204-521	.392	56-199	.281	147-207	.710	111	237	348	38.7	164	-	120	148	41	75	611	67.9

TEAM STATISTICS	UTM	OPP	Date	Opponent	Score	Att.
SCORING	588	611	11/12/10	at Southern Illinois	w 62-50	436
Points per game	65.3	67.9	11-14-10	at Indiana State	L 62-70	3641
Scoring margin	-2.6	-	11-17-10	at BELMONT	w 73-52	727
FIELD GOALS-ATT	197-543	204-521	11/21/10	at Colorado	L 67-78	1112
Field goal pct	.363	.392	11/23/10	at Air Force	w 91-87	633
3 POINT FG-ATT	61-210	56-199	* 12/2/10	at Morehead State	L 82-103	1010
3-point FG pct	.290	.281	* 12/04/10	at Eastern Kentucky University	w 61-46	250
3-pt FG made per game	6.8	6.2	12/7/10	at Missouri	L 30-53	1207
FREE THROWS-ATT	133-190	147-207	12/09/10	at Vanderbilt	L 60-72	3764
Free throw pct	.700	.710				
F-Throws made per game	14.8	16.3				
REBOUNDS	370	348				
Rebounds per game	41.1	38.7				
Rebounding margin	+2.4	-				
ASSISTS	84	120				
Assists per game	9.3	13.3				
TURNOVERS	155	148				
Turnovers per game	17.2	16.4				
Turnover margin	-0.8	-				
Assist/turnover ratio	0.5	0.8				
STEALS	73	75				
Steals per game	8.1	8.3				
BLOCKS	23	41				
Blocks per game	2.6	4.6				
ATTENDANCE	0	12780				
Home games-Avg/Game	0-0	9-1420				
Neutral site-Avg/Game	-	0-0				

\* - Conference game

Score by Periods	1st	2nd	Totals
UT Martin	256	332	588
Opponents	272	339	611