



VS.

## Memphis

October 13

Volleyball Contact: Matthew Maxey • mmaxey@utm.edu • (731) 881-7632 • (731) 881-7624 - Fax • 1022 Elam Center • Martin, TN 38238

# SKYHAWKS

(7-11, 2-7 OVC)

VS.



**MEMPHIS**  
(4-17, 1-6 CUSA)

**Record vs. UTM:**  
11-1 Memphis leads

**Last 10 Matches:**  
2-8

**Top Hitter:**  
Altrese Hawkins  
206 kills/2.86 kps

**Top Blocker:**  
Carolyn Baker  
62 blocks/0.91 bps

UT Martin and Memphis are renewing an instate rivalry that dates back to 1993. In the history of the series UT Martin has managed only one win in 12 contests, picking up a 3-1 neutral court win at the 1997 Western Kentucky Hilltopper Invitational.

Memphis enters the match after a three set loss to Marshall and having dropped 10 of their last 12. The Skyhawks enter in identical fashion and both teams will be looking for a non-conference boost to push them through the remainder of their respective conference schedules.

The key for the Skyhawks to pick up their first-ever win at Memphis will be stopping Altrese Hawkins, who tallies 2.86 kills per match. Leading UT Martin in its defensive effort will be Kasey Elswick who's 4.97 digs per set is among the top 35 in the nation along with Britany Wilburn who has turned away 47 blocks this year.

### PROBABLE STARTING LINEUP

NO.	NAME	POS.	HT.	CL.	K/S	PCT.	D/S	B/S	A/S
1	Ashley Doherty	OH	5-11	So.	2.48	.281	0.16	0.59	0.00
3	Jenna Kragt	RS	6-0	Jr.	1.14	.134	0.20	0.48	0.40
7	Jenna Miller	S	5-10	So.	0.61	.363	2.00	0.36	8.93
10	Kasey Elswick	LIB	5-7	Fr.	0.05	-.027	4.97	0.00	0.27
13	Lauren Montague	OH	6-0	Jr.	2.87	.192	1.92	0.44	0.13
17	Katie Redman	OH	5-11	Jr.	1.43	0.80	1.00	0.22	0.13
18	Britany Wilburn	MB	6-0	So.	2.50	.244	0.47	0.78	0.03

### MATCH NOTES

- UT Martin and Memphis are meeting for the 13th time as Division I programs, and UT Martin is looking for its second win over the Tigers, after the last win back in 1997.
- Freshman setter Kelsey Miles will playing in front of a hometown crowd, after prepping at nearby St. Benedict at Auburndale High School.
- UT Martin's Lauren Montague has been the top offensive threat this year, setting a new career high for kills in two of the last three matches.
- Defensive Specialist Kasey Elswick enters the weekend ranked No. 31 nationally with 4.97 digs-per-set.

### 2009 Schedule/Results

#### AUGUST (3-1)

28	1-vs. Centenary	W 3-0
28	1-at Louisiana Tech	W 3-1
29	1-vs. Arkansas-Pine Bluff	W 3-0
29	1-vs. South Alabama	L 3-1

#### SEPTEMBER (3-7)

4	2-at Indiana	W 3-1
5	2-vs. Illinois-Chicago	W 3-1
5	2-vs. No. 18 Kentucky	L 0-3
8	ARKANSAS STATE	L 0-3
14	at Evansville	L 0-3
18	EASTERN KENTUCKY*	W 3-2
19	MOREHEAD STATE*	L 3-2
22	SOUTHEAST MISSOURI*	L 3-0
25	at Tennessee Tech*	L 3-0
26	at Jacksonville State*	L 3-2

#### OCTOBER (1-3)

1	at Murray State*	L 3-0
6	EASTERN ILLINOIS*	W 3-0
9	at Morehead State*	L 3-0
10	at Eastern Kentucky*	L 3-0
13	at Memphis	6 p.m.
16	TENNESSEE STATE*	7 p.m.
17	AUSTIN PEAY*	2 p.m.
23	JACKSONVILLE STATE*	7 p.m.
24	TENNESSEE TECH*	2 p.m.
30	at Eastern Illinois*	7 p.m.
31	at Southeast Missouri*	2 p.m.

#### NOVEMBER (0-0)

5	MURRAY STATE*	7 p.m.
6	SIU EDWARDSVILLE	7 p.m.
13	at Austin Peay*	7 p.m.
19	3-OVC Tournament	TBA
20	3-OVC Tournament	TBA
21	3-OVC Tournament	TBA

\*Ohio Valley Conference contest

ALL CAPS - Home Match

1-Techster Home Tournament, Ruston, La.

2-Indiana Adidas Classic, Bloomington, Ind.

3-Ohio Valley Conference Tournament, TBA

All times are central and subject to change

## 2009 QUICK FACTS

### UNIVERSITY

LOCATION: Martin, Tenn.  
 FOUNDED: 1900  
 ENROLLMENT: 8,101  
 NICKNAME: Skyhawks  
 COLORS: Navy Blue & Orange  
 FACILITY: Skyhawk Fieldhouse  
 AFFILIATION: NCAA Division I  
 CONFERENCE: Ohio Valley  
 CHANCELLOR: Dr. Tom Rakes

### ATHLETIC DEPARTMENT

ATHLETICS DIRECTOR: Phil Dane  
 ASSISTANT/SWA: Danelle Fabianich  
 ASSISTANT AD/COMPLIANCE: Col. Bill Kaler  
 ASSISTANT AD/ATH. TRAINING: Bart Belew

### VOLLEYBALL STAFF

HEAD COACH: Darrin McClure  
 Record at UTM: 16-35  
 Overall Record: 16-35  
 ASSISTANT COACH: Kristi Fiorillo  
 McCLURE PHONE: 731-881-7332  
 McCLURE EMAIL: dmcclure@utm.edu  
 ATHLETIC TRAINER: Dani Walker

### VOLLEYBALL HISTORY

FIRST YEAR: 1969  
 FIRST YEAR OF DIVISION I: 1992  
 ALL-TIME RECORD: 592-587-1  
 RECORD AT SKYHAWK FIELDHOUSE: 103-101  
 RECORD ON THE ROAD: 123-201  
 RECORD AT NEUTRAL: 61-70  
 ALL-TIME OVC RECORD: 114-180

### ATHLETIC COMMUNICATIONS

DIRECTOR: Joe Lofaro  
 ASSISTANT DIR.: Matthew Maxey  
 ASSISTANT: Ryne Rickman  
 VB CONTACT: Matthew Maxey  
 PHONE: 731-881-7632  
 FAX: 731-881-7624  
 EMAIL: mmaxey@utm.edu  
 MAIL: 1022 Elam Center  
 UT Martin Athletics Department  
 Martin, TN 38237

Follow UT Martin volleyball on:

**OVCSPORTS.TV**

YOUR SOURCE FOR LIVE & ON-DEMAND  
 STREAMING VIDEO & AUDIO ON THE WEB!



**SIGN UP TODAY AT  
 OVCSPORTS.TV!**

## MEDIA INFORMATION

### ATHLETIC COMMUNICATIONS

UT Martin Assistant Athletic Communications Director Matthew Maxey handles the athletic communications needs for the UT Martin volleyball team. He can be reached in his office at (731) 881-7632, via e-mail at mmaxey@utm.edu.

### INTERVIEW POLICIES

Media interviews with players and coaches are encouraged, and every effort will be made to accommodate media requests. In-person interviews are preferred. Telephone interviews can be arranged through the office of Athletic Communications. The best time to reach head coach Darrin McClure is weekdays before noon.

### POST MATCH AVAILABILITY

Players and coaches will be available for interviews at the volleyball court, after a brief cooling-off period, at the conclusion of each match. Media will be provided full stat packages upon completion of each match. Skyhawk head coach Darrin McClure and selected players will be made available upon request. Requests for players will be taken near the end of each match. Space, wireless internet and phone lines will be made available following post game interviews for filing stories.

### CREDENTIALS

No media credentials are required for coverage of regular-season home matches since admission is free. For post-season matches, credentials may be obtained through the office of Athletic Communications.

### PRESS ROW

Press Row for UT Martin volleyball is located directly behind the official score table in Skyhawk Fieldhouse at an elevated height for easy viewing. Skyhawk Fieldhouse is located off Mt. Pelia Drive. Wireless internet access is available throughout the Fieldhouse and phone lines are available upon request from the UT Martin Athletic Communications Office. Media parking is located across Mt. Pelia Drive from Skyhawk Fieldhouse. There is no charge for parking.

### SKYHAWKS LIVE ON THE WEB

All home matches and select road matches throughout the season, can be seen live on the Ohio Valley Conference's streaming video network, OVCsports.tv. All available matches will be broadcast live, and available on demand throughout the season. Prices for single game viewing begin at \$5.95 and full season packages can be purchased for \$99.95.

### WRITING ABOUT UT MARTIN

The name of our institution is The University of Tennessee at Martin and if abbreviated, should be referred to as UT Martin. The University of Tennessee at Martin will work in first reference in a news story, UT Martin should be used in subsequent references and UTM is acceptable in headlines. Tennessee-Martin, UT-Martin, UT or Martin should never be used. Skyhawks should be used to represent all UT Martin athletic teams. Lady Skyhawks or Hawks should never be used.

VB Contact: Matthew Maxey  
 mmaxey@utm.edu

### UTM VOLLEYBALL SCHEDULE

731.881.7632  
 731.881.7624 (fax)

SUN-11	MON-12	TUES-13	WED-14	THUR-15	FRI-16	SAT-17
OFF	Practice 3 p.m.	at Memphis 6 p.m.	Practice 3 p.m.	Practice 4 p.m.	Tennessee State 7 p.m.  Dig Red Night	Austin Peay 2 p.m.
SUN-18	MON-19	TUES-20	WED-21	THUR-22	FRI-23	SAT-24
OFF	Practice 3 p.m.	Practice 3 p.m.	Practice 3 p.m.	Practice 4 p.m.	Jacksonville State 7 p.m.	Tennessee Tech 2 p.m.

**www.utmsports.com**

## HEAD COACH DARRIN McCLURE



Darrin McClure is in his second season at the helm of The University of Tennessee at Martin volleyball program. After having previously served as an assistant coach in 2005 and 2006 seasons, McClure then guided the program back to the Ohio Valley Conference Tournament for the first time in six seasons as interim head coach for the 2008 campaign. McClure was officially then named the program's sixth head coach January 13, 2009.

In his first season guiding the program on an interim basis, McClure was able to bring in a talented recruiting class that contributed from day one. That paired with a core group of returners helped him lead the Skyhawks to a 9-24 overall record but more impressively a 7-11 OVC mark, which matched the most conference wins for the program since winning the league in 2002 with a 15-1 OVC record. McClure also guided UT Martin back to the OVC Tournament, which hadn't been done since the 2002 season.

Prior to returning to his undergraduate alma mater in a head coaching capacity, McClure was a history teacher at Martin Middle School. At the same time he also directed the volleyball program at the University School of Jackson and guided them through the rebuilding process after graduating a wealth of talent from their district championship squad. With a majority of freshmen and sophomores on the floor, McClure guided USJ to a third-place showing in his first year at the helm.

Additionally, McClure also coached the Jackson Juniors Club Team to a second-place finish in the region. The Jackson Juniors were formally known as the Gotcha Volleyball Club, which McClure was a cofounder of in 2004.

McClure gained valuable playing experience prior to joining the UT Martin volleyball program. He played middle blocker and outside hitter for the Paducah Volleyball Club for five years from 1994-99 and guided them to a pair of tournament victories. McClure was also part of the Spike-It-Up Amateur Volleyball Tour that competed 2v2 competition throughout the Southeast and Midwest. McClure helped guide his Spike-It-Up team to its highest finish of third during a tour stop in Cincinnati, Ohio.

During the off-season, prior to the start of the 2008 campaign, McClure attended the Gold Medal Squared Coaching Camp, an elite coaching clinic conducted by former US Olympic team coach Carl McGowan and two-time Olympic gold medal winning coach Marv Dumphy. McClure and some of the top collegiate coaches in the nation worked with the Olympic pair to learn from their proven coaching and motivational techniques.

McClure is married to his wife Jennifer, who is also a graduate of UT Martin and the couple has one child, Miles.



## CURRENT OVC STANDINGS

TEAM	OVC	OVR
Jacksonville State	9-0	16-5
Morehead State	8-1	15-5
Austin Peay	7-1	13-5
Tennessee Tech	5-4	6-12
Eastern Kentucky	4-4	4-13
Murray State	3-5	3-15
Southeast Missouri	3-6	6-12
UT Martin	2-7	7-11
Tennessee State	1-6	2-15
Eastern Illinois	1-7	7-13

## OVC Offensive Player of the Week

Aug. 31	Emily Hughes, Southeast Missouri
Sept. 7	<b>Ashley Doherty, UT Martin</b>
Sept. 14	Stephanie Champine, Austin Peay
Sept. 21	Melanie Boykins, Eastern Illinois
Sept. 28	Stephanie Champine, Austin Peay
Oct. 5	Lauren Snyder, Eastern Kentucky
Oct. 12	Stephanie Champine, Austin Peay
Oct. 19	
Oct. 26	
Nov. 2	

## OVC Defensive Player of the Week

Aug. 31	Lauren Harkins, Jacksonville State
Sept. 7	Katie Kenline, Tennessee Tech
Sept. 14	Molly Davis, Southeast Missouri
Sept. 21	Molly Davis, Southeast Missouri
Sept. 28	Molly Davis, Southeast Missouri
Oct. 5	Abby O'Connor, Eastern Kentucky
Oct. 12	Lauren Harkins, Jacksonville State
Oct. 19	
Oct. 26	
Nov. 2	

## OVC Setter of the Week

Aug. 31	Sara Barth, Southeast Missouri
Sept. 7	Brooke Schumacher, Jacksonville State
Sept. 14	Melanie Culp, Tennessee Tech
Sept. 21	Jade Guo, Murray State
Sept. 28	Sarah Alisaleh, Austin Peay
Oct. 5	Kate Hendle, Eastern Kentucky
Oct. 12	co-Sarah Alisaleh, Austin Peay
Oct. 12	co-Kate Hendle, Eastern Kentucky
Oct. 19	
Oct. 26	
Nov. 2	

## 2009 SKYHAWK VOLLEYBALL ROSTER

No.	Name	Position	Class	Height	Hometown
1	Ashley Doherty	OH/MB	So.	5-11	Crystal Lake, Ill.
2	Cassidy Hawkins	MB/OPP	Fr.	6-1	Lexington, Tenn.
3	Jenna Kragt	MB	Jr.	6-0	Ritzville, Wash.
4	Ellee Agee	MB	R-Fr.	6-0	Cookeville, Tenn.
6	Kelsey Miles	S	Fr.	5-8	Cordova, Tenn.
7	Jenna Miller	S	So.	5-10	Highland Village, Texas
9	Christen Clements	OH/MB	So.	6-0	Birmingham, Ala.
10	Kasey Elswick	DS	Fr.	5-7	Louisville, Ky.
13	Lauren Montague	OH	Jr.	6-0	Normal, Ill.
17	Katie Redman	OH	Jr.	5-11	Round Mountain, Nev.
18	Britany Wilburn	OH/MB	So.	6-0	Southaven, Miss.
21	Kelly Hogan	OH	Fr.	5-9	Aurora, Ill.
22	Kelsea Merriweather	OH	Fr.	5-8	Jackson, Tenn.

### Head Coach:

Darrin McClure, Second Season  
UT Martin, 2005

### Assistant Coach:

Kristi Fiorillo, Second Season  
Clarion, 2008

### Athletic Trainer:

Dani Walker, Second Season  
UT Martin, 2003

## PRONUNCIATION GUIDE

1	Ashley Doherty	Ash-Lee Doh-er-tee
3	Jenna Kragt	Jen-na Krot
4	Ellee Agee	El-E Age-E
5	Cassidy Hawkins	Cas-i-dee Hawk-in-s
9	Christen Clements	Chris-tin Clem-ents
10	Kasey Elswick	Ka-see Els-wick
13	Lauren Montague	Mont-A-Gue
22	Kelsea Merriweather	Kel-see Mary-weather
	HC Darrin McClure	Darrin Mc-Clure
	AC Kristi Fiorillo	Fee-o-rill-o

## CBS/AVCA COACHES POLL

Week 6: September 29, 2009

No.	School	Points	Record
1	Penn State (48)	1485	16-0
2	Texas (9)	1441	11-0
3	Washington (3)	1394	14-0
4	Hawai'i	1320	13-2
5	Minnesota	1207	13-3
6	Florida	1090	11-2
7	Stanford	1073	9-4
8	Michigan	1046	15-2
9	Nebraska	952	10-4
<b>10</b>	<b>Kentucky</b>	<b>883</b>	<b>15-1</b>
11	Oregon	872	11-2
12	Illinois	816	10-3
13	Southern California	774	13-3
14	Iowa State	739	12-3
15	California	726	8-5
16	UCLA	688	12-5
17	Baylor	583	16-1
18	Michigan State	372	14-2
19	Florida State	350	12-2
20	Long Beach State	330	10-3
21	Saint Louis	271	10-5
22	Arizona	216	12-3
23	UC Irvine	185	13-3
24	San Diego	122	9-4
25	Washington State	113	14-1

Others Receiving Votes and appearing on two or more ballots: Texas A&M 88; LSU 42; Oregon State 42; St. Mary's (Ca.) 38; Colorado State 33; Notre Dame 32; Dayton 26; Duke 25; UC Santa Barbara 25; Wichita State 22; Pepperdine 18; Northern Iowa 16; Missouri State 13; Indiana 9; Purdue 9; Cal State Fullerton 6

## SKYHAWKS IN THE RANKINGS

CATEGORY TEAM	OVC RANK	NCAA RANK
Team Hit. % (.176)	6	226
Opp. Hit. % (.229)	7	NR
Assists (10.98)	7	203
Kills (11.77)	7	222
Blocks (1.50)	6	258
Service Aces (1.18)	5	203
Digs (14.96)	6	105

CATEGORY INDIVIDUAL	OVC RANK	NCAA RANK
<u>Hitting Percentage</u>		
Ashley Doherty (.299)	2	203
<u>Kills</u>		
-	-	-
<u>Assists</u>		
Jenna Miller (8.87)	7	172
<u>Aces</u>		
Jenna Miller (0.27)	10	NR
<u>Digs Per Set</u>		
Kasey Elswick (4.91)	3	31
<u>Blocks</u>		
-	-	-

## OPPONENT NOTES

### MEMPHIS (4-17, 1-6 CUSA)



Memphis enters the match after a three set loss to Marshall and having dropped 10 of their last 12. The Skyhawks enter in identical fashion and both teams will be looking for a non-conference boost to push them through the remainder of their respective conference schedules. The key for the Skyhawks to pick up their first-ever win at Memphis will be stopping Altrese Hawkins, who tallies 2.86 kills per match. Leading UT Martin in its defensive effort will be Kasey Elswick who's 4.97 digs per set is among the top 35 in the nation along with Britany Wilburn who has turned away 47 blocks this year.

SERIES RECORD: Memphis leads 11-1

2009 OPPONENT COMPARISONS	K/S	PCT.	A/S	SA/S	D/S	B/S
Memphis	12.15	.199	11.29	1.21	15.08	2.06
UT Martin	11.77	.177	11.03	1.14	15.00	1.58

## UT MARTIN'S 2009 MATCH-BY-MATCH LEADERS

Opponent	Kills	Attempts	Assists	Digs	Blocks
vs. Centenary	Montague (9)	Montague (21)	Miller (24)	Elswick (10)	Wilburn (6)
at Louisiana Tech	Doherty (14)	Montague (41)	Miller (46)	Elswick/Clements (19)	Doherty (5)
vs. Arkansas-Pine Bluff	Kragt/Agee (7)	Kragt/Redman (21)	Miles (21)	Hogan (12)	Wilburn/Kragt (4)
South Alabama	Montague (13)	Montague (38)	Miller (34)	Elswick (17)	Doherty (5)
at Indiana	Wilburn (15)	Montague (49)	Miller (48)	Elswick (20)	Wilburn (4)
vs. Illinois-Chicago	Wilburn (14)	Montague (35)	Miller (41)	Elswick (17)	Doherty/Miller (2)
vs. No. 18 Kentucky	Doherty (9)	Montague (23)	Miller (18)	Clements (11)	Montague (4)
Arkansas State	Doherty (9)	Clements (36)	Miller (30)	Elswick (20)	Wilburn (3)
at Evansville	Montague (12)	Montague (33)	Miles (31)	Elswick (12)	Doherty (2)
Eastern Kentucky	Doherty/Wilburn (14)	Clements (52)	Miller (48)	Elswick (26)	Doherty (5)
Morehead State	Kragt (15)	Montague (43)	Miller (31)	Elswick (39)	Agee (5)
Southeast Missouri	Doherty (17)	Montague (41)	Miller (27)	Elswick (19)	Doherty/Kragt/Wilburn (1)
at Tennessee Tech	Montague (8)	Montague (36)	Miller (21)	Elswick (14)	N/A
at Jacksonville State	Wilburn (16)	Montague (40)	Miller (46)	Elswick (22)	Montague/Wilburn (4)
at Murray State	Montague/Wilburn (10)	Montague (26)	Miller (38)	Elswick (18)	Doherty/Montague/Wilburn (2)
Eastern Illinois	Montague (15)	Montague (34)	Miller (36)	Elswick (17)	Kragt (4)
at Morehead State	Montague (10)	Montague (27)	Miller (21)	Elswick (14)	Kragt/Doherty/Wilburn (1)
at Eastern Kentucky	Montague (15)	Montague (30)	Miller (27)	Elswick (17)	Wilburn (4)
at Memphis					
Tennessee State					
Austin Peay					
Jacksonville State					
Tennessee Tech					
at Eastern Illinois					
at Southeast Missouri					
Murray State					
SIU Edwardsville					
at Austin Peay					
<b>Times led:</b>	Montague (8) Doherty (5) Wilburn (5) Kragt (2) Agee (1)	Montague (15) Clements (2) Redman (1) Kragt (1)	Miller (16) Miles (2)	Elswick (16) Clements (2) Hogan (1)	Wilburn (9) Doherty (8) Kragt (4) Montague (3) Miller (1) Agee (1)

## INJURY REPORT

Sophomore setter Jenna Miller left the Evansville match because of illness but is expected to be available for play against Eastern Kentucky and Morehead State.

## SKYHAWKS PICKED SEVENTH IN OVC, WILBURN ALL-OVC

The UT Martin volleyball team turned a lot of heads in 2008 when it went from being picked to finish in the Ohio Valley Conference cellar to qualifying for the conference tournament. In the process it also earned a little more respect around the league, which was reflected Aug. 11 when the preseason All-OVC Teams and predicted order of finish was released. By a vote of the league's head coaches and sports information directors, sophomore middle blocker Britany Wilburn earned a spot on the All-OVC Second Team while the Skyhawks were picked to finish seventh.

## UT MARTIN IN SEASON OPENERS

In season opening matches, UT Martin is 12-16 overall since 1982. Last year's season opening 3-2 win over Northwestern State at the Austin Peay Lady Gobs Invitational broke a string of seven consecutive season opening losses that dated back to the 2002 season and this year's 3-0 season-opening win over Centenary marked the first time UT Martin registered back-to-back season opening wins since 2000 and 2001.

## SKYHAWKS WELCOME FIVE FRESHMEN

The freshmen class is filled with championship experience ranging from the state championship level to club team national championships. The young talent, Kelly Hogan, Kasey Elswick, Cassidy Hawkins, Kelsea Merriweather and Kelsey Miles will all be able draw on those high school and club experiences to make the transition to college more smoothly. Hogan led her high school team to team to four consecutive regional championships from 2005-2008 in addition to the 2007 Suburban Catholic Conference championship in 2007 and the Waubensee Valley High School Tournament crown in 2008. Elswick prepped at Assumption High School in Louisville, Ky., where she helped the Rockets win three consecutive Kentucky state championships from 2005-07. She also competed on a pair of AAU National Championship squads in 2005 and 2007. Hawkins comes from nearby Lexington, Tenn., where she led her team to back-to-back regional titles and a pair of berths into the Tennessee State Tournament. Merriweather was a four-year member of the Southside team in Jackson, Tenn., leading them to a four-year record of 156-32 and was twice named the Jackson/Madison County Athlete of the Year. Miles prepped at St. Benedict at Auburndale, in Cordova, Tenn., where she helped lead her team to a pair of regional championships in 2006 and 2007 in addition to a sub-state championship in 2009 that earned St. Benedict a berth in the Tennessee State Tournament.

## SKYHAWKS ADD A PAIR OF TRANSFERS IN 09

A pair of junior college transfers Katie Redman and Jenna Kragt join the Skyhawks this season and immediately become some of the eldest members of the team. Redman, the 2007 Nevada Female Athlete of the Year, comes to UT Martin from Feather River College in Quincy, Calif., where she helped lead her team to a 36-16 record and a pair of appearances in the California state playoffs. Redman was also twice named the Feather River Female Athlete of the Year. Kragt comes to UT Martin from Walla Walla Community College in Walla Walla, Wash., where she was an AVCA All-American selection and helped lead her team to a two-year record of 70-21.

## UT MARTIN IN THE PELICAN STATE

The Skyhawks season-opening tournament in Ruston, Louisiana marked only the second time that UT Martin had ventured to the Pelican State for a match. The first trip to the Bayou came in 2007 when the Skyhawks went 2-1 at the Rajun Cajun Classic, hosted by Louisiana-Lafayette University. At the Rajun Cajun, the Skyhawks dropped a five-set heartbreaker to Central Arkansas before winning a 3-2 affair over the tournament host and a three-set sweep of Jackson State. This time UT Martin earned a 3-1 record at the Louisiana Tech Lady Techster Tournament, downing Centenary and host Louisiana Tech on day one before splitting with Arkansas-Pine Bluff and South Alabama to close out the tournament.

## TOO YOUNG TO KNOW BETTER

The UT Martin volleyball team entered the 2009 season as one of the youngest teams in all of NCAA Division I volleyball.

With no seniors on the squad and only one three-year junior on the roster, the Skyhawks started the year with only six years of combined experience in 2009.

The eldest member of the UT Martin squad is red shirt junior and team captain Lauren Montague, who was forced to sit out last season with a knee injury. The rest of the team's experience comes from a quartet of sophomores who all saw a great deal of time on the floor as freshmen. The leader of that group of four is preseason All-OVC Second Team member Britany Wilburn.

The formula to calculate the experience levels provided one year of experience to every player on the roster that was eligible to compete in a season, actual playing time and red shirt seasons were not factored in to the experience level.

Freshman - 1 yr experience  
Sophomore - 2 yrs experience  
Junior - 3 yrs experience  
Senior - 4 yrs experience

Team	Experience
Southern Utah*	0
Bryant University**	5
<b>UT Martin</b>	<b>6</b>
Centenary# (W 3-0)	7
Tennessee State#	8
Indiana# (W 3-2)	10
James Madison	11
Niagara	11
Oral Roberts	11
Chattanooga	12
Manhattan	12
South Dakota State	14
Oakland	16
McNeese State	16
IPFW	17
Idaho State	18
New Mexico State	18
North Dakota State	19
Western Illinois	20
Louisiana Tech# (W 3-1)	20

\* First Year of Program

\*\* Second Year of Program

# 2009 UT Martin Opponent

## MISCELLANEOUS MATCH NOTES

### TEAM

Most Kills	61
Fewest Kills	24
Most Attempts	206
Fewest Attempts	81
Highest Attacking Pct.	.309
Lowest Attacking Pct.	.027
Most Assists	56
Fewest Assists	22
Most Aces	9
Fewest Aces	0
Most Digs	84
Fewest Digs	32
Most Blocks	15.0
Fewest Blocks	0.0
Most Points	76.0
Fewest Points	27.0

### OPPONENT

Most Kills	74
Fewest Kills	20
Most Attempts	187
Fewest Attempts	83
Highest Attacking Pct.	.424
Lowest Attacking Pct.	-.040
Most Assists	68
Fewest Assists	19
Most Aces	7
Fewest Aces	1
Most Digs	95
Fewest Digs	32
Most Blocks	15.0
Fewest Blocks	2.0
Most Points	83
Fewest Points	23

## OVC PRESEASON PREDICTIONS

1. Murray State (9)
2. Morehead State (5)
3. Southeast Missouri (2)
4. Austin Peay (2)
5. Tennessee Tech (2)
6. Jacksonville State
7. **UT Martin**
8. Eastern Kentucky
9. Tennessee State
10. Eastern Illinois

## UT MARTIN'S RECORD WHEN...

### NUMBER OF GAMES

3-set matches	3-8
4-set matches	2-1
5-set matches	2-2

### GAME-BY-GAME

Winning first set	5-1
Losing losing first set	2-10
Leading 2-0	4-0
Trailing 0-2	1-9
Tied 1-1	2-2
Leading 2-1	3-0
Trailing 1-2	1-3
Tied 2-2	2-2

### HITTING PERCENTAGE

Hitting below .200	2-9
Hitting .200 - .249	3-0
Hitting .250 - .299	1-2
Hitting above .300	1-0

### KILLS

Out killing opponent	6-1
Kills are even with opponent	0-0
Being Out killed by opponent	1-10

### DIGS

Out digging opponent	2-0
Digs are even with opponent	1-0
Being Out dug by opponent	4-11

### BLOCKS

Out blocking opponent	4-2
Blocks are even with opponent	0-0
Being Out blocked by opponent	3-9

### TIME OF DAY

Day Matches	4-4
Night Matches	3-7

### DAYS OF THE WEEK

Monday	0-1
Tuesday	1-3
Thursday	0-0
Friday	4-2
Saturday	2-5

### MONTHS OF THE YEAR

August	3-1
September	3-7
October	1-3
November	0-0

### GAME SITES

Home	2-3
Away	2-6
Neutral	3-2

### TYPE OF GAME

Conference	2-7
Non-Conference	5-4

### RANKED OPPONENTS

vs. Top 10	0-0
vs. Top 25	0-1
Receiving Votes	0-0

## LEADING LADIES IN LOUISIANA

The Skyhawks opened the 2009 season with a 3-1 record at the Louisiana Tech Lady Techster Tournament, thanks in large part to the contributions of team captain Lauren Montague, who was a Lady Techster All-Tournament Team selection. In the tournament, Montague tallied a team-best 36 kills in 12 sets played. Montague also turned away seven blocks at the net and scooped up 26 digs. Britany Wilburn also announced herself by being a dominant presence at the net. She hit .253 over four matches with 32 kills, while also turning away a team-best 17 blocks. Other personal highlights from the opening weekend of play was the return of sophomore setter Jenna Miller with 112 assists and the emergence of true-freshman defensive specialist Kasey Elswick with 51 digs.

## SKYHAWKS AGAINST THE TOP 25

UT Martin's match with No. 18 Kentucky will mark only the fourth time in program history it has faced an opponent ranked in the AVCA Top 25. The first top 25 match came in 2002 when the then OVC Champion Skyhawks faced No. 4 Nebraska in the first round of the NCAA Tournament in Lincoln, Neb., eventually falling 3-0. The only other two top 25 matches both came at the 2004 Lady Vol Classic. UT Martin dropped a 3-0 decision to No. 24 Purdue on day one, before also falling 3-0 to No. 22 Tennessee in Knoxville on day two.

Opponent	Venue	Result
No. 4 Nebraska	2002 NCAA Tourn.	L 0-3
No. 22 Purdue	2004 Lady Vol Classic	L 0-3
No. 24 Tennessee	2004 Lady Vol Classic	L 0-3
No. 18 Kentucky	2009 IU Adidas Classic	TBA

## SKYHAWKS TAKE SECOND AT INDIANA ADIDAS CLASSIC

UT Martin entered the Indiana Adidas Classic as a large underdog, but announced its presence right off the bat when it knocked off tournament host Indiana during the Hoosier's home opening match. Against Indiana the Skyhawks fell behind 0-2 but then after adjusting their offensive scheme they rallied back to take down the Hoosiers in five sets. UT Martin followed up its win over Indiana with a 3-1 win over Illinois-Chicago, which set up an Adidas Classic championship match against No. 18 Kentucky on the final day. The Wildcats showed why they are a top 25 program, prevailing 3-0, but the Skyhawks were still able to claim second place in the five team tournament. Indiana and Illinois-Chicago finished in a tie for third while fellow OVC member Murray State went 0-3 on the weekend to finish in fifth.

## DOHERTY AND MILLER NAMED ALL-TOURNEY AT ADIDAS CLASSIC

UT Martin's sophomore duo of Ashley Doherty and Jenna Miller were both named to the Indiana Adidas Classic All-Tournament Team after their performances at the tournament. Doherty finished the three matches with a .452 hitting percentage and a team-high 34 kills. Her showing was highlighted by the Indiana match where she recorded a hitting percentage of .600. It was her second match in as many weeks to hit .600, and matched the second best single-match hitting performance in team history. Miller recorded 107 assists in the three matches, while also setting or matching three career-highs. She set a new career-best kills mark against Illinois-Chicago with six kills. In the Indiana match she recorded a career-best four service aces while also matching her best assist showing with 48.

## ARKANSAS STATE VENGEANCE HAS TO WAIT ONE MORE YEAR

UT Martin entered its match against looking to pick up a win in the home opener and avenge a loss to Arkansas State from the previous year. Neither came to fruition though as the Red Wolves were able to take the match in straight sets. On the night though, then reigning Ohio Valley Conference offensive player of the week Ashley Doherty led the way with nine kills, while Christen Clements added eight.

## UT MARTIN'S 2009 DOUBLE-DOUBLES

Player	Opponent	Date	Stat Line
<u>Lauren Montague (1)</u>	Louisiana Tech	8/28/09	10 kills, 10 digs
<u>Lauren Montague (2)</u>	South Alabama	8/29/09	13 kills, 12 digs
<u>Lauren Montague (3)</u>	Jacksonville State	9/26/09	15 kills, 11 digs
<u>Christen Clements (1)</u>	Louisiana Tech	8/28/09	11 kills, 19 digs
<u>Christen Clements (2)</u>	Eastern Kentucky	9/18/09	13 kills, 12 digs
<u>Jenna Miller (1)</u>	Louisiana Tech	8/28/09	46 assists/10 digs
<u>Jenna Miller (2)</u>	Eastern Kentucky	9/18/09	48 assists/16 digs
<u>Jenna Miller (3)</u>	Southeast Missouri	9/22/09	27 assists/15 digs

## **UTM UNABLE TO SPOIL PURPLE ACES OPENER**

UT Martin attempted to spoil the Evansville Purple Aces home debut but were unable to play the role of spoiler as Evansville was able to take the match in straight sets and in the process accumulate the highest hitting percentage (.424) that any Skyhawk opponent has this season. In the match starting setter Jenna Miller had to be benched midway through the opening set because of illness, but freshman setter Kelsey Miles stepped in an recorded a career-best 31 assists in only two and a half sets played.

## **UTM IN CONFERENCE OPENING MATCHES**

UT Martin has not had good fortune when opening Ohio Valley Conference play. Since joining the conference in 1992, the Skyhawks have amassed a record of only 5-12 in the conference openers. At home UT Martin has tallied a record of 2-7 in OVC openers at the Fieldhouse. The last time the Skyhawks started the conference race 1-0 was in 2003 with a 3-0 road win over Murray State, the last time they picked up an opening win at the Fieldhouse was also against Murray State, and again 3-0, back in 2000. This year UT Martin will look to knock off Eastern Kentucky in the conference opener. The only other time the Skyhawks and Colonels met in an OVC opening match was in 2004, when Eastern Kentucky escaped with a straight set win.

## **CAPITALIZING ON COLONELS VISIT IN FIVE**

UT Martin was able to pick up its first OVC opening win since 2003 when it knocked off visiting Eastern Kentucky in five sets. In the five-set win the Skyhawks used a number of career-best nights to seal the win. Sophomore setter Jenna Miller matched her career-high for assists when she dished out 48, while sophomore Christen Clements recorded a new record 13 kills and defensive and freshman Kasey Elswick picked up 26 digs on defense. The win over Eastern Kentucky also marked the second five-set win of the year for UT Martin.

## **WHAT COULD HAVE BEEN vs. MOREHEAD STATE**

UT Martin fell behind 2-0 to visiting Morehead State before mounting an impressive comeback to force a fifth and deciding set for the second time in a 24 hour time frame. Unlike the previous two five set matches though, this time the Skyhawks were unable to pull out the win and suffered their first five set loss of the season. In the match though the Skyhawks recorded a number of career records. Junior Jenna Kragt more than doubled her previous career-high for kills when she put away 15 and hit .538. Sophomore Christen Clements also matched a career-best with 13 kills, a record she set less than 24 hours prior against Eastern Kentucky. The big record of the night though came from freshman Kasey Elswick, who scooped up 39 digs setting not only her own personal best but also marking the best single-match performance in program history.

## **ELSWICK DIGGING IN THE RECORD BOOKS**

Freshman defensive specialist Kasey Elswick signed to play for the Skyhawks with a certain goal in mind...that goal: to break the program's career digs record. In effort to break that career record, Elswick has already etched her name in the permanent record books in only her 11th match in a UT Martin uniform. Against Morehead State Elswick scooped 39 digs to break the program's single-match digs record, which was previously held by Anna Gautreau with 34 in 2007.

## **DOHERTY TURNS IN CAREER NIGHT vs SEMO**

For the Sept. 22, home match against Southeast Missouri UT Martin fans participated in a WHITE OUT of the Fieldhouse, but the match resulted in a disappointing 3-0 loss. Fans though did have a bright spot to cheer for as sophomore Ashley Doherty turned in a career-best 17 kills on the night. Doherty's career showing came on a career-high 40 attempts and also in only three sets.

## **SKYHAWKS DIGGING RED TO FIGHT ALS**

For the last few seasons UT Martin has held an annual fund raiser for the Susan G. Komen Foundation, to help fight the battle against breast cancer. This year though the Skyhawk volleyball team will turn its fund raising attention to a cause that has become very close to the team, which is the fight against Lou Gehrig's Disease or ALS as it is also known. Sophomore Skyhawk Ellee Agee's mother, Linda, valiantly fought ALS until it untimely took her life October 5th of this year. In support of the ALS Foundation and Mrs. Linda Agee, UT Martin volleyball will collect pledges and donations from family, friends and community members based on the number of digs earned by the Skyhawks in their Oct. 16 match against Tennessee State.

## **SKID SNAPPED AT FIVE AGAINST EIU**

The Skyhawks snapped a five-game losing skid in commanding fashion when they took care of Eastern Illinois in straight sets at home. UT Martin made some changes to its offensive scheme one day before the match in practice, and they paid off as the Skyhawks hit .289, while Lauren Montague tallied 15 kills and Britany Wilburn added 14.

## **STREAKING AGAINST THE PANTHERS**

The Skyhawks 3-0 win at home against Eastern Illinois marked the seventh straight win over the Panthers, dating back to the 2006 season. The last time Eastern Illinois took a match from UT Martin was back on Oct. 14, 2005. The current winning streak over Eastern Illinois is currently the longest against any OVC opponent.

# 2009 UT MARTIN STATISTICS

**Overall Record: 7-11**

**Home: 2-3**

**Away: 2-7**

**Neutral: 3-2**

**Ohio Valley Conference Record: 2-7**

#	Player	sp	Attack				Set		Serve			Dig		Blocking					points			
			k	k/s	e	ta	pct	a	a/s	sa	se	sa/s	re	dig	dig/s	bs	ba	total		blk/s	be	bhe
13	MONTAGUE, Lauren	63	181	2.87	69	583	.192	8	0.13	6	14	0.10	20	121	1.92	0	28	28	0.44	9	0	201.0
1	DOHERTY, Ashley	63	156	2.48	52	370	.281	6	0.10	0	0	0.00	0	10	0.16	3	34	37	0.59	7	0	176.0
18	WILBURN, Britany	60	150	2.50	54	394	.244	2	0.03	9	15	0.15	0	28	0.47	2	45	47	0.78	7	0	183.5
9	CLEMENTS, Christen	62	104	1.68	74	419	.072	12	0.19	13	40	0.21	21	152	2.45	1	10	11	0.18	2	0	123.0
3	KRAGT, Jenna	50	57	1.14	33	179	.134	20	0.40	0	1	0.00	0	10	0.20	2	22	24	0.48	14	1	70.0
7	MILLER, Jenna	61	37	0.61	4	91	.363	545	8.93	16	24	0.26	1	122	2.00	0	22	22	0.36	9	14	64.0
17	REDMAN, Katie	23	33	1.43	24	112	.080	3	0.13	7	3	0.30	0	23	1.00	0	5	5	0.22	5	2	42.5
4	AGEE, Ellee	16	17	1.06	9	49	.163	1	0.06	0	0	0.00	0	3	0.19	0	13	13	0.81	0	1	23.5
22	MERRIWEATHER, Kel	4	10	2.50	2	31	.258	1	0.25	0	0	0.00	2	12	3.00	0	0	0	0.00	0	0	10.0
21	HOGAN, Kelly	63	8	0.13	12	83	-.048	13	0.21	6	11	0.10	7	150	2.38	0	0	0	0.00	0	2	14.0
2	HAWKINS, Cassidy	18	7	0.39	6	26	.038	7	0.39	3	0	0.17	0	9	0.50	1	8	9	0.50	4	1	15.0
10	ELSWICK, Kasey	64	3	0.05	4	37	-.027	17	0.27	11	20	0.17	19	318	4.97	0	0	0	0.00	0	3	14.0
6	MILES, Kelsey	19	2	0.11	0	7	.286	82	4.32	3	3	0.16	0	17	0.89	0	1	1	0.05	1	1	5.5
	TEAM	-	-	-	-	-	-	-	-	-	-	-	7	-	-	-	-	-	-	-	-	-
	UT MARTIN	65	765	11.77	343	2381	.177	717	11.03	74	131	1.14	77	975	15.00	9	188	103.0	1.58	58	25	942.0
	Opponents	65	855	13.15	326	2323	.228	791	12.17	77	119	1.18	74	1118	17.20	24	192	120.0	1.85	38	22	1052.0

Team Statistics	UTM	OPP
ATTACK		
Kills	765	855
Errors	343	326
Total Attacks	2381	2323
Attack Pct	.177	.228
Kills/Set	9.2	10.3
SET		
Assists	717	791
Assists/Set	8.6	9.5
SERVE		
Aces	74	77
Errors	131	119
Aces/Set	0.9	0.9
SERVE RECEPTIONS		
Errors	77	74
Errors/Set	0.9	0.9
DEFENSE		
Digs	975	1118
Digs/Set	11.7	13.5
BLOCKING		
Block Solo	9	24
Block Assist	188	192
Total Blocks	103.0	120.0
Blocks Per Game	1.2	1.4
Block Errors	58	38
Ball handling errors	25	22
ATTENDANCE		
Total	1937	1678
Dates/Avg Per Date	5/387	8/210
Neutral site #/Avg	5/153	
Current win streak	0	-
Home win streak	1	-

Date	Opponent	Score	Score by set	Att.
#Aug 28	vs Centenary	W 3-0	25-17,25-7,25-16	73
#Aug 28	at LATECH	W 3-1	25-22,25-21,14-25,27-25	117
#Aug 29	vs UA Pine-Bluff	W 3-0	25-10,25-18,25-20	37
#Aug 29	vs South Alabama	L 1-3	19-25,25-20,21-25,18-25	63
Sept 4	at Indiana	W 3-2	14-25,23-25,25-19,25-23,15-12	315
Sept 5	vs UIC	W 3-1	25-23,19-25,25-14,25-23	312
Sept 5	vs Kentucky	L 0-3	12-25,16-25,14-25	278
Sep 08	ARKANSAS STATE	L 0-3	22-25,18-25,17-25	569
Sep 14	at EVANSVILLE	L 0-3	12-25,19-25,20-25	417
*Sep 18	EASTERN KENTUCKY	W 3-2	26-28,25-14,25-20,21-25,15-9	439
*Sep 19	MOREHEAD STATE	L 2-3	23-25,15-25,25-19,25-22,12-15	297
*Sep 22	SOUTHEAST MISSOURI	L 0-3	16-25,18-25,22-25	313
*Sep 25	at Tennessee Tech	L 0-3	18-25,13-25,10-25	131
*Sep 26	at Jacksonville State	L 2-3	21-25,25-23,19-25,25-20,11-15	204
*Oct 01	at Murray State	L 0-3	17-25,22-25,20-25	207
*Oct 06	EASTERN ILLINOIS	W 3-0	25-23,25-23,25-22	319
*Oct 09	at Morehead State	L 0-3	14-25,14-25,21-25	187
*Oct 10	at Eastern Kentucky	L 0-3	16-25,21-25,24-26	100

Record in 3-set matches: 3-8  
 Record in 4-set matches: 2-1  
 Record in 5-set matches: 2-2

# 2009 UT MARTIN OVC ONLY STATISTICS

**Overall Record: 7-11**

**Home: 2-3**

**Away: 2-7**

**Neutral: 3-2**

**Ohio Valley Conference Record: 2-7**

#	Player	sp	Attack				Set		Serve			Dig		Blocking					points			
			k	k/s	e	ta	pct	a	a/s	sa	se	sa/s	re	dig	dig/s	bs	ba	total		blk/s	be	bhe
13	MONTAGUE, Lauren	33	99	3.00	31	310	.219	3	0.09	5	5	0.15	10	72	2.18	0	14	14	0.42	7	0	111.0
1	DOHERTY, Ashley	33	81	2.45	30	210	.243	3	0.09	0	0	0.00	0	8	0.24	1	17	18	0.55	5	0	90.5
18	WILBURN, Britany	30	72	2.40	20	191	.272	2	0.07	2	7	0.07	0	20	0.67	1	17	18	0.60	6	0	83.5
9	CLEMENTS, Christen	33	43	1.30	38	201	.025	3	0.09	7	22	0.21	7	69	2.09	1	4	5	0.15	1	0	53.0
3	KRAGT, Jenna	30	37	1.23	16	115	.183	11	0.37	0	0	0.00	0	8	0.27	2	15	17	0.57	14	1	46.5
17	REDMAN, Katie	18	24	1.33	14	84	.119	1	0.06	0	3	0.00	0	15	0.83	0	4	4	0.22	3	2	26.0
7	MILLER, Jenna	33	13	0.39	3	51	.196	295	8.94	8	10	0.24	0	75	2.27	0	6	6	0.18	8	13	24.0
2	HAWKINS, Cassidy	10	4	0.40	3	10	.100	3	0.30	0	0	0.00	0	3	0.30	1	7	8	0.80	3	1	8.5
21	HOGAN, Kelly	31	4	0.13	8	48	-.083	6	0.19	3	3	0.10	4	67	2.16	0	0	0	0.00	0	1	7.0
4	AGEE, Ellee	5	2	0.40	1	6	.167	0	0.00	0	0	0.00	0	1	0.20	0	5	5	1.00	0	0	4.5
22	MERRIWEATHER, Kel	2	2	1.00	1	11	.091	0	0.00	0	0	0.00	1	5	2.50	0	0	0	0.00	0	0	2.0
10	ELSWICK, Kasey	33	1	0.03	2	19	-.053	4	0.12	6	14	0.18	11	186	5.64	0	0	0	0.00	0	2	7.0
6	MILES, Kelsey	7	0	0.00	0	1	.000	29	4.14	2	2	0.29	0	6	0.86	0	0	0	0.00	0	0	2.0
	TEAM	-	-	-	-	-	-	-	-	-	-	-	6	-	-	-	-	-	-	-	-	-
	UT MARTIN	33	382	11.58	167	1257	.171	360	10.91	33	66	1.00	39	535	16.21	6	89	50.5	1.53	47	20	465.5
	Opponents	33	456	13.82	164	1249	.234	423	12.82	39	56	1.18	33	621	18.82	11	86	54.0	1.64	25	6	549.0

Team Statistics	UTM	OPP
<b>ATTACK</b>		
Kills	382	456
Errors	167	164
Total Attacks	1257	1249
Attack Pct	.171	.234
Kills/Set	9.1	10.9
<b>SET</b>		
Assists	360	423
Assists/Set	8.6	10.1
<b>SERVE</b>		
Aces	33	39
Errors	66	56
Aces/Set	0.8	0.9
<b>SERVE RECEPTIONS</b>		
Errors	39	33
Errors/Set	0.9	0.8
<b>DEFENSE</b>		
Digs	535	621
Digs/Set	12.7	14.8
<b>BLOCKING</b>		
Block Solo	6	11
Block Assist	89	86
Total Blocks	50.5	54.0
Blocks Per Game	1.2	1.3
Block Errors	47	25
Ball handling errors	20	6
<b>ATTENDANCE</b>		
Total	1368	829
Dates/Avg Per Date	4/342	5/166
Neutral site #/Avg	0/0	-
Current win streak	0	-
Home win streak	1	-

Date	Opponent	Score	Score by set	Att.
*Sep 18	EASTERN KENTUCKY	W 3-2	26-28,25-14,25-20,21-25,15-9	439
*Sep 19	MOREHEAD STATE	L 2-3	23-25,15-25,25-19,25-22,12-15	297
*Sep 22	SOUTHEAST MISSOURI	L 0-3	16-25,18-25,22-25	313
*Sep 25	at Tennessee Tech	L 0-3	18-25,13-25,10-25	131
*Sep 26	at Jacksonville State	L 2-3	21-25,25-23,19-25,25-20,11-15	204
*Oct 01	at Murray State	L 0-3	17-25,22-25,20-25	207
*Oct 06	EASTERN ILLINOIS	W 3-0	25-23,25-23,25-22	319
*Oct 09	at Morehead State	L 0-3	14-25,14-25,21-25	187
*Oct 10	at Eastern Kentucky	L 0-3	16-25,21-25,24-26	100

Record in 3-set matches: 1-5  
 Record in 4-set matches: 0-0  
 Record in 5-set matches: 1-2



# Ashley DOHERTY

# 1

Sophomore • 5-11 • Middle Blocker  
Crystal Lake, Ill.

Prairie Ridge High School

### 2009 NOTES

- Set a new career-high with 17 kills at home against Southeast Missouri
- Named OVC Offensive Player of the Week, Sept. 7, 2009
- Named to Indiana Adidas Classic All-Tournament Team
- Hit .600 for the second time in as many weeks against Indiana, matching second best single-match hitting percentage in program history.
- Hit .600 with seven kills against Centenary at Louisiana Tech Lady Techster Tournament, matching second best single-match hitting percentage in program history.
- Doherty returns this season ranking No. 2 in kills from last year with 201

### 2009 SEASON HIGHS

**KILLS:** 17 vs. Southeast Missouri (9-22-09)  
**ATTEMPTS:** 40 vs. Southeast Missouri (9-22-09)  
**ASSISTS:** 1 at Eastern Kentucky (10-10-09)  
**DIGS:** 1 at Indiana (9/4/09)  
**ACES:** N/A  
**BLOCKS:** 5 vs. South Alabama (8-29-09)

### CAREER HIGHS

**KILLS:** 17 vs. Southeast Missouri (9-22-09)  
**ATTEMPTS:** 40 vs. Southeast Missouri (9-22-09)  
**ASSISTS:** 1 at Eastern Kentucky (10-10-09)  
**DIGS:** 5 vs. Eastern Kentucky (9-27-08)  
**ACES:** 3 at Murray State (10-21-08)  
**BLOCKS:** 7 vs. Lamar (9-12-08)

### Ashley Doherty Career Stats

Season	sp-mp	k	k/s	e	ta	pct	a	a/s	sa	sa/s	se
2008	100-28	198	1.98	68	517	.251	6	0.06	16	0.16	21
2009	63-18	156	2.48	52	370	.281	6	0.10	0	0.00	0
TOTAL	163-46	354	2.17	120	887	.264	12	0.07	16	0.10	21

Season	dig	d/s	re	bs	ba	tb	b/s	be	bhe	points	pts/s
2008	38	0.38	0	4	64	68	0.68	1	0	250.0	2.50
2009	10	0.16	0	3	34	37	0.59	7	0	176.0	2.79
TOTAL	48	0.29	0	7	98	105	0.64	8	0	426.0	2.61



# Cassidy HAWKINS

# 2

Freshman • 6-1 • Middle Blocker  
Lexington, Tenn.

Lexington High School

### 2009 NOTES

- Re-entered the starting lineup at Eastern Kentucky and recorded a season high for kills and blocks.
- Hawkins made her collegiate debut at the Louisiana Tech Lady Techster Tournament against Arkansas-Pine Bluff.
- Hawkins comes from nearby Lexington, Tenn., where she led her team to back-to-back regional titles and a pair of berths into the Tennessee State Tournament.

### 2009 SEASON HIGHS

**KILLS:** 2 at Eastern Kentucky (10-10-09)  
**ATTEMPTS:** 8 vs. Arkansas-Pine Bluff (8-29-09)  
**ASSISTS:** 3 vs. Arkansas-Pine Bluff (8-29-09)  
**DIGS:** 4 vs. Illinois-Chicago (9-4-09)  
**ACES:** 3 vs. Arkansas-Pine Bluff (8-29-09)  
**BLOCKS:** 1.5 at Eastern Kentucky (10-10-09)

### CAREER HIGHS

**KILLS:** 2 at Eastern Kentucky (10-10-09)  
**ATTEMPTS:** 8 vs. Arkansas-Pine Bluff (8-29-09)  
**ASSISTS:** 3 vs. Arkansas-Pine Bluff (8-29-09)  
**DIGS:** 4 vs. Illinois-Chicago (9-4-09)  
**ACES:** 3 vs. Arkansas-Pine Bluff (8-29-09)  
**BLOCKS:** 1.5 at Eastern Kentucky (10-10-09)

### Cassidy Hawkins Career Stats

Season	sp-mp	k	k/s	e	ta	pct	a	a/s	sa	sa/s	se
2009	18-9	7	0.39	6	26	.038	7	0.39	3	0.17	0
TOTAL	18-9	7	0.39	6	26	.038	7	0.39	3	0.17	0

Season	dig	d/s	re	bs	ba	tb	b/s	be	bhe	points	pts/s
2009	9	0.50	0	1	8	9	0.50	4	1	15.0	0.83
TOTAL	9	0.50	0	1	8	9	0.50	4	1	15.0	0.83



# Jenna KRAGT

# 3

Junior • 6-0 • Middle Blocker  
Ritzville, Wash.

Walla Walla Community College

### 2009 NOTES

- More than doubled her previous career kills mark with 15 against Morehead State.
- Kragt made her Skyhawk debut starting all four matches at the Louisiana Tech Lady Techster Tournament, recording 12 kills and seven blocks at the net.
- Kragt comes to UT Martin from Walla Walla Community College in Walla Walla, Wash., where she was an AVCA All-American selection and helped lead her team to a two-year record of 70-21.

### 2009 SEASON HIGHS

**KILLS:** 15 vs. Morehead State (9-19-09)  
**ATTEMPTS:** 26 vs. Morehead State (9-19-09)  
**ASSISTS:** 3 vs. Louisiana Tech (8-28-09)  
**DIGS:** 1 vs. Centenary (8-28-09)  
**ACES:** N/A  
**BLOCKS:** 7 vs. Morehead State (9-19-09)

### CAREER HIGHS

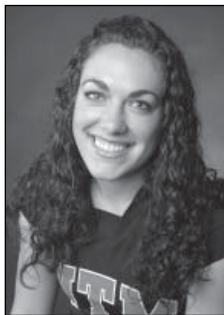
**KILLS:** 15 vs. Morehead State (9-19-09)  
**ATTEMPTS:** 26 vs. Morehead State (9-19-09)  
**ASSISTS:** 3 vs. Louisiana Tech (8-28-09)  
**DIGS:** 1 vs. Centenary (8-28-09)  
**ACES:** N/A  
**BLOCKS:** 7 vs. Morehead State (9-19-09)

### Jenna Kragt Career Stats

Season	sp-mp	k	k/s	e	ta	pct	a	a/s	sa	sa/s	se
2009	50-17	57	1.14	33	179	.134	20	0.40	0	0.00	1
TOTAL	50-17	57	1.14	33	179	.134	20	0.40	0	0.00	1

Season	dig	d/s	re	bs	ba	tb	b/s	be	bhe	points	pts/s
2009	10	0.20	0	2	22	24	0.48	14	1	70.0	1.40
TOTAL	10	0.20	0	2	22	24	0.48	14	1	70.0	1.40



# Ellee AGEE

# 4

R-Freshman • 6-0 • Middle Blocker  
Cookeville, Tenn.

Cookeville High School

### 2009 NOTES

- Suffered an injury against Southeast Missouri that kept her out of the line up for two weeks.
- Set a new blocks career mark with five turnaways against Morehead State.
- Agee received a medical red shirt last season and returns at full strength from shoulder surgery

### 2009 SEASON HIGHS

**KILLS:** 7 vs. Arkansas-Pine Bluff (8-29-09)  
**ATTEMPTS:** 13 vs. Arkansas-Pine Bluff (8-29-09)  
**ASSISTS:** 1 vs. Centenary (8-28-09)  
**DIGS:** 1 vs. Arkansas State (9-8-09)  
**ACES:** N/A  
**BLOCKS:** 5 vs. Morehead State (9-19-09)

### CAREER HIGHS

**KILLS:** 7 vs. Arkansas-Pine Bluff (8-29-09)  
**ATTEMPTS:** 13 vs. Arkansas-Pine Bluff (8-29-09)  
**ASSISTS:** 1 vs. Centenary (8-28-09)  
**DIGS:** 1 vs. Arkansas State (9-8-09)  
**ACES:** N/A  
**BLOCKS:** 5 vs. Morehead State (9-19-09)

### Ellee Agee Career Stats

Season	sp-mp	k	k/s	e	ta	pct	a	a/s	sa	sa/s	se
2009	16-8	17	1.06	9	49	.163	1	0.06	0	0.00	0
TOTAL	16-8	17	1.06	9	49	.163	1	0.06	0	0.00	0

Season	dig	d/s	re	bs	ba	tb	b/s	be	bhe	points	pts/s
2009	3	0.19	0	0	13	13	0.81	0	1	23.5	1.44
TOTAL	3	0.19	0	0	13	13	0.81	0	1	23.5	1.44



# Kelsey MILES

# 6

Freshman • 5-8 • Setter

Cordova, Tenn.

Saint Benedict at Auburndale

## 2009 SEASON HIGHS

<b>KILLS:</b>	1 at Evansville (9/14-09)
<b>ATTEMPTS:</b>	3 at Evansville (9/14-09)
<b>ASSISTS:</b>	31 at Evansville (9/14-09)
<b>DIGS:</b>	6 vs. Arkansas-Pine Bluff (8-29-09)
<b>ACES:</b>	N/A
<b>BLOCKS:</b>	N/A

## CAREER HIGHS

<b>KILLS:</b>	1 at Evansville (9/14-09)
<b>ATTEMPTS:</b>	3 at Evansville (9/14-09)
<b>ASSISTS:</b>	31 at Evansville (9/14-09)
<b>DIGS:</b>	6 vs. Arkansas-Pine Bluff (8-29-09)
<b>ACES:</b>	N/A
<b>BLOCKS:</b>	N/A

## 2009 NOTES

- Recorded a career-best 31 assists on the road against Evansville
- Miles prepped at St. Benedict at Auburndale, in Cordova, Tenn., where she helped lead her team to a pair of regional championships in 2006 and 2007 in addition to a sub-state championship in 2009 that earned St. Benedict a berth in the Tennessee State Tournament.

### Kelsey Miles Career Stats

Season	sp-mp	k	k/s	e	ta	pct	a	a/s	sa	sa/s	se
2009	19-11	2	0.11	0	7	.286	82	4.32	3	0.16	3
TOTAL	19-11	2	0.11	0	7	.286	82	4.32	3	0.16	3

Season	dig	d/s	re	bs	ba	tb	b/s	be	bhe	points	pts/s
2009	17	0.89	0	0	1	1	0.05	1	1	5.5	0.26
TOTAL	17	0.89	0	0	1	1	0.05	1	1	5.5	0.26



# Jenna MILLER

# 7

Sophomore • 5-10 • Setter

Highland Village, Texas

Marcus High School

## 2009 SEASON HIGHS

<b>KILLS:</b>	6 at Indiana (9-4-09)
<b>ATTEMPTS:</b>	10 vs. Illinois-Chicago (9-5-09)
<b>ASSISTS:</b>	48 at Indiana (9-4-09)
<b>DIGS:</b>	16 vs. Eastern Kentucky (9-18-09)
<b>ACES:</b>	4 vs. Illinois-Chicago (9-5-09)
<b>BLOCKS:</b>	4 vs. Centenary (8-28-09)

## CAREER HIGHS

<b>KILLS:</b>	6 at Indiana (9-4-09)
<b>ATTEMPTS:</b>	10 vs. Illinois-Chicago (9-5-09)
<b>ASSISTS:</b>	48 at Indiana (9-4-09)
<b>DIGS:</b>	16 vs. Eastern Kentucky (9-18-09)
<b>ACES:</b>	4 vs. Illinois-Chicago (9-5-09)
<b>BLOCKS:</b>	4 vs. Centenary (8-28-09)

## 2009 NOTES

- Named to the Indiana Adidas Classic All-Tournament Team
- Set two new career-highs at Indiana Adidas Classic with six kills against Indiana and four service aces against Illinois-Chicago. Also tied a career-best with 48 assists in the Indiana match.
- Miller returned from her injury shortened freshman year with 112 assists at the Louisiana Tech Lady Techster Tournament and a pair of career-best four kill matches against Centenary and Louisiana Tech.
- Miller was the starting setter as a true-freshman last season before a back injury cut her year short 15 matches into the season.

### Jenna Miller Career Stats

Season	sp-mp	k	k/s	e	ta	pct	a	a/s	sa	sa/s	se
2008	47-15	10	0.21	3	48	.146	262	5.57	9	0.19	23
2009	61-18	37	0.61	4	91	.363	545	8.93	16	0.26	24
TOTAL	108-33	47	0.44	7	139	.288	807	7.47	25	0.23	47

Season	dig	d/s	re	bs	ba	tb	b/s	be	bhe	points	pts/s
2008	80	1.70	1	1	4	5	0.11	0	3	22.0	0.47
2009	122	2.00	1	0	22	22	0.36	9	14	64.0	1.05
TOTAL	202	1.87	2	1	26	27	0.25	9	17	86.0	0.80



# Christen CLEMENTS 9

Sophomore • 6-0 • Outside Hitter  
 Birmingham, Ala.  
 Oak Mountain High School

### 2009 NOTES

- Set a new career-record for aces with four against Indiana at Indiana Adidas Classic.
- Clements set three career highs (kills, attempts, assists) and match a fourth (blocks) against Louisiana Tech at the Lady Techster Tournament.
- Clements returns as a sophomore and will move to the outside hitter role after filling in on back row defense as a freshman, appearing in 31 matches and starting five.

### 2009 SEASON HIGHS

**KILLS:** 13 vs. Morehead State (9-19-09)  
**ATTEMPTS:** 42 vs. Morehead (9-19-09)  
**ASSISTS:** 2 vs. Arkansas State (9-8-09)  
**DIGS:** 19 vs. Louisiana Tech (8-28-09)  
**ACES:** 4 at Indiana (9-4-09)  
**BLOCKS:** 2 vs. Louisiana Tech (8-28-09)

### CAREER HIGHS

**KILLS:** 13 vs. Morehead State (9-19-09)  
**ATTEMPTS:** 42 vs. Morehead (9-19-09)  
**ASSISTS:** 2 vs. Arkansas State (9-8-09)  
**DIGS:** 21 vs. Southeast Missouri (10-18-08)  
**ACES:** 4 at Indiana (9-4-09)  
**BLOCKS:** 2 vs. Louisiana Tech (8-28-09)

Christen Clements Career Stats												
Season	sp-mp	k	k/s	e	ta	pct	a	a/s	sa	sa/s	se	
2008	93-31	32	0.34	39	186	-.038	8	0.09	12	0.13	20	
2009	62-18	104	1.68	74	419	.072	12	0.19	13	0.21	40	
TOTAL	155-49	136	0.88	113	605	.038	20	0.13	25	0.16	60	

Season	dig	d/s	re	bs	ba	tb	b/s	be	bhe	points	pts/s
2008	193	2.08	19	0	3	3	0.03	0	0	45.5	0.48
2009	152	2.45	21	1	10	11	0.18	2	0	123.0	1.98
TOTAL	345	2.23	40	1	13	14	0.09	2	0	168.5	1.08



# Kasey ELSWICK 10

Freshman • 5-7 • Defensive Specialist  
 Louisville, Ky.  
 Assumption High School

### 2009 NOTES

- Broke the program's single-match digs record with a new personal best 39 against Morehead State.
- Set a new season and career benchmark with 24 digs against Indiana at Indiana Adidas Classic
- Elswick announced her presence known on defense at the Louisiana Tech Lady Techster, recording 51 digs in 13 sets played, including a career-best 19 against Louisiana Tech.
- Elswick prepped at Assumption High School in Louisville, Ky., where she helped the Rockets win three consecutive Kentucky state championships from 2005-07. She also competed on a pair of AAU National Championship squads in 2005 and 2007.

### 2009 SEASON HIGHS

**KILLS:** 1 vs. Eastern Kentucky (9-18-09)  
**ATTEMPTS:** 6 vs. Morehead State (9-19-09)  
**ASSISTS:** 2 vs. Louisiana Tech (8-28-09)  
**DIGS:** 39 vs. Morehead State (9-19-09)  
**ACES:** 2 at Indiana (9-4-09)  
**BLOCKS:** N/A

### CAREER HIGHS

**KILLS:** 1 vs. Eastern Kentucky (9-18-09)  
**ATTEMPTS:** 6 vs. Morehead State (9-19-09)  
**ASSISTS:** 2 vs. Louisiana Tech (8-28-09)  
**DIGS:** 39 vs. Morehead State (9-19-09)  
**ACES:** 2 at Indiana (9-4-09)  
**BLOCKS:** N/A

Kasey Elswick Career Stats												
Season	sp-mp	k	k/s	e	ta	pct	a	a/s	sa	sa/s	se	
2009	64-18	3	0.05	4	37	-.027	17	0.27	11	0.17	20	
TOTAL	64-18	3	0.05	4	37	-.027	17	0.27	11	0.17	20	

Season	dig	d/s	re	bs	ba	tb	b/s	be	bhe	points	pts/s
2009	318	4.97	19	0	0	0	0.00	0	3	14.0	0.22
TOTAL	318	4.97	19	0	0	0	0.00	0	3	14.0	0.22



# Lauren MONTAGUE 13

R-Junior • 6-0 • Outside Hitter

Normal, Ill.

Normal High School

### 2009 NOTES

- Set a new career-high for kills with 15 against Eastern Illinois, then matched it later the same week at Eastern Kentucky.
- Named to the Louisiana Tech Lady Techster All-Tournament Team.
- In Montague's fourth match back after an injury red shirt season she matched a career-high with 13 kills against South Alabama at the Louisiana Tech Lady Techster Tournament.
- Montague received a medical red shirt last season after a knee injury sidelined her only seven matches into the year.
- Montague is the eldest member of the Skyhawks squad as a junior

### 2009 SEASON HIGHS

**KILLS:** 15 at Eastern Kentucky (10-10-09)  
**ATTEMPTS:** 49 at Indiana (9-4-09)  
**ASSISTS:** 2 vs. South Alabama (8-29-09)  
**DIGS:** 10 at Morehead State (10-9-09)  
**ACES:** 2 vs. Eastern Kentucky (9-18-09)  
**BLOCKS:** 4 vs. Centenary (8-28-09)

### CAREER HIGHS

**KILLS:** 15 at Eastern Kentucky (10-10-09)  
**ATTEMPTS:** 58 vs. Northwestern State (9-29-08)  
**ASSISTS:** 15 vs. North Carolina A&T (9-2-07)  
**DIGS:** 19 vs. Austin Peay (10-27-07)  
**ACES:** 4 vs. Jackson State (9-25-07)  
**BLOCKS:** 5 at Eastern Illinois (9-21-07)

### Lauren Montague Career Stats

Season	sp-mp	k	k/s	e	ta	pct	a	a/s	sa	sa/s	se
2006	52-25	65	1.25	32	197	.168	6	0.12	6	0.12	11
2007	106-30	234	2.21	128	827	.128	15	0.14	21	0.20	25
2008	22-8	45	2.05	28	211	.081	6	0.27	4	0.18	4
2009	63-18	181	2.87	69	583	.192	8	0.13	6	0.10	14
TOTAL	243-81	525	2.16	257	1818	.147	35	0.14	37	0.15	54

Season	dig	d/s	re	bs	ba	tb	b/s	be	bhe	points	pts/s
2006	37	0.71	14	2	7	9	0.17	3	2	76.5	1.46
2007	258	2.43	56	1	43	44	0.42	8	1	277.5	2.61
2008	53	2.41	8	1	1	2	0.09	0	0	50.5	2.27
2009	121	1.92	20	0	28	28	0.44	9	0	201.0	3.19
TOTAL	469	1.93	98	4	79	83	0.34	20	3	605.5	2.49



# Katie REDMAN 17

Junior • 5-11 • Outside Hitter

Round Mountain, Nev.

Feather River Community College

### 2009 NOTES

- Redman appeared in all four matches of the Louisiana Tech Lady Techster Tournament, registering her best match against Arkansas-Pine Bluff with six kills, five digs and four service aces.
- Redman, the 2007 Nevada Female Athlete of the Year, comes to UT Martin from Feather River College in Quincy, Calif., where she helped lead her team to a 36-16 record and a pair of appearances in the California state playoffs. Redman was also twice named the Feather River Female Athlete of the Year.

### 2009 SEASON HIGHS

**KILLS:** 6 vs. Eastern Illinois (10-7-09)  
**ATTEMPTS:** 21 vs. Arkansas-Pine Bluff (8-29-09)  
**ASSISTS:** 1 vs. Arkansas-Pine Bluff (8-29-09)  
**DIGS:** 5 vs. Arkansas-Pine Bluff (8-29-09)  
**ACES:** 4 vs. Arkansas-Pine Bluff (8-29-09)  
**BLOCKS:** 1 vs. Eastern Illinois (10-7-09)

### CAREER HIGHS

**KILLS:** 6 vs. Eastern Illinois (10-7-09)  
**ATTEMPTS:** 21 vs. Arkansas-Pine Bluff (8-29-09)  
**ASSISTS:** 1 vs. Arkansas-Pine Bluff (8-29-09)  
**DIGS:** 5 vs. Arkansas-Pine Bluff (8-29-09)  
**ACES:** 4 vs. Arkansas-Pine Bluff (8-29-09)  
**BLOCKS:** 1 vs. Eastern Illinois (10-7-09)

### Katie Redman Career Stats

Season	sp-mp	k	k/s	e	ta	pct	a	a/s	sa	sa/s	se
2009	23-10	33	1.43	24	112	.080	3	0.13	7	0.30	3
TOTAL	23-10	33	1.43	24	112	.080	3	0.13	7	0.30	3

Season	dig	d/s	re	bs	ba	tb	b/s	be	bhe	points	pts/s
2009	23	1.00	0	0	5	5	0.22	5	2	42.5	1.83
TOTAL	23	1.00	0	0	5	5	0.22	5	2	42.5	1.83



# Britany WILBURN 18

Sophomore • 6-0 • Middle Blocker  
Southaven, Miss.  
Southaven High School

### 2009 NOTES

- Matched a career-high with 15 kills at Indiana while also setting a new career-best mark with two service aces.
- Wilburn was named a member of the preseason All-OVC Second Team
- Wilburn was a walk-on freshman last season that ended up starting 32 matches and is the top returner in kills (245) and blocks (94) from last year.

### 2009 SEASON HIGHS

**KILLS:** 15 at Indiana (9-4-09)  
**ATTEMPTS:** 37 vs. Eastern Kentucky (9-18-09)  
**ASSISTS:** 1 at Jacksonville State (9-26-09)  
**DIGS:** 5 vs. Eastern Kentucky (9-18-09)  
**ACES:** 2 at Indiana (9-4-09)  
**BLOCKS:** 6 vs. Centenary (8-28-09)

### CAREER HIGHS

**KILLS:** 15 at Indiana (9-4-09)  
**ATTEMPTS:** 27 vs. Eastern Kentucky (9-27-08)  
**ASSISTS:** 1 at Murray State (10-21-08)  
**DIGS:** 5 vs. Eastern Kentucky (9-18-09)  
**ACES:** 2 at Indiana (9-4-09)  
**BLOCKS:** 7 vs. Southeast Missouri (10-18-08)

### Britany Wilburn Career Stats

Season	sp-mp	k	k/s	e	ta	pct	a	a/s	sa	sa/s	se
2008	123-33	245	1.99	81	583	.281	10	0.08	1	0.01	3
2009	60-18	150	2.50	54	394	.244	2	0.03	9	0.15	15
TOTAL	183-51	395	2.16	135	977	.266	12	0.07	10	0.05	18

Season	dig	d/s	re	bs	ba	tb	b/s	be	bhe	points	pts/s
2008	27	0.22	0	8	86	94	0.76	3	1	297.0	2.41
2009	28	0.47	0	2	45	47	0.78	7	0	183.5	3.05
TOTAL	55	0.30	0	10	131	141	0.77	10	1	480.5	2.62



# Kelly HOGAN 21

Freshman • 5-9 • Outside Hitter  
St. Charles, Ill.  
Rosary High School

### 2009 NOTES

- Matched a career-high with 12 digs against Indiana, while setting new personal career-best marks in kills with two against Illinois-Chicago and aces with her first career one against Kentucky.
- Hogan made her collegiate debut at the Louisiana Tech Lady Techster Tournament, playing all 14 sets of the tournament, with her top showing coming with 12 digs against Arkansas-Pine Bluff.
- Hogan led her high school team to team to four consecutive regional championships from 2005-2008 in addition to the 2007 Suburban Catholic Conference championship in 2007 and the Waubensee Valley High School Tournament crown in 2008.

### 2009 SEASON HIGHS

**KILLS:** 2 vs. Illinois-Chicago (9-5-09)  
**ATTEMPTS:** 13 vs. Eastern Kentucky (9-18-09)  
**ASSISTS:** 3 at Indiana (9-4-09)  
**DIGS:** 15 vs. Arkansas State (9-8-09)  
**ACES:** 1 vs. Kentucky (9-5-09)  
**BLOCKS:** N/A

### CAREER HIGHS

**KILLS:** 2 vs. Illinois-Chicago (9-5-09)  
**ATTEMPTS:** 13 vs. Eastern Kentucky (9-18-09)  
**ASSISTS:** 3 at Indiana (9-4-09)  
**DIGS:** 15 vs. Arkansas State (9-8-09)  
**ACES:** 1 vs. Kentucky (9-5-09)  
**BLOCKS:** N/A

### Kelly Hogan Career Stats

Season	sp-mp	k	k/s	e	ta	pct	a	a/s	sa	sa/s	se
2009	63-18	8	0.13	12	83	-.048	13	0.21	6	0.10	11
TOTAL	63-18	8	0.13	12	83	-.048	13	0.21	6	0.10	11

Season	dig	d/s	re	bs	ba	tb	b/s	be	bhe	points	pts/s
2009	150	2.38	7	0	0	0	0.00	0	2	14.0	0.22
TOTAL	150	2.38	7	0	0	0	0.00	0	2	14.0	0.22



# Kelsea MERRIWEATHER 22

Freshman • 5-8 • Outside Hitter

Jackson, Tenn.

South Side High School

## 2009 SEASON HIGHS

**KILLS:** 8 vs. Arkansas-Pine Bluff (8-29-09)

**ATTEMPTS:** 20 vs. Arkansas-Pine Bluff (8-29-09)

**ASSISTS:** 1 vs. Arkansas-Pine Bluff (8-29-09)

**DIGS:** 7 vs. Arkansas-Pine Bluff (8-29-09)

**ACES:** N/A

**BLOCKS:** N/A

## CAREER HIGHS

**KILLS:** 8 vs. Arkansas-Pine Bluff (8-29-09)

**ATTEMPTS:** 20 vs. Arkansas-Pine Bluff (8-29-09)

**ASSISTS:** 1 vs. Arkansas-Pine Bluff (8-29-09)

**DIGS:** 7 vs. Arkansas-Pine Bluff (8-29-09)

**ACES:** N/A

**BLOCKS:** N/A

### 2009 NOTES

- Merriweather made her collegiate debut at the Louisiana Tech Lady Techster Tournament, playing in two sets against Arkansas-Pine Bluff.
- Merriweather was a four-year member of the Southside team in Jackson, Tenn., leading them to a four-year record of 156-32 and was twice named the Jackson/Madison County Athlete of the Year.

### Kelsea Merriweather Career Stats

Season	sp-mp	k	k/s	e	ta	pct	a	a/s	sa	sa/s	se
2009	4-2	10	2.50	2	31	.258	1	0.25	0	0.00	0
TOTAL	4-2	10	2.50	2	31	.258	1	0.25	0	0.00	0
Season	dig	d/s	re	bs	ba	tb	b/s	be	bhe	points	pts/s
2009	12	3.00	2	0	0	0	0.00	0	0	10.0	2.50
TOTAL	12	3.00	2	0	0	0	0.00	0	0	10.0	2.50

# CAREER RECORD BOOKS

KILLS		
1. Amy Ohrt	1263	1994-97
2. Rachel Ahlers	1196	1999-02
3. Heather Kea	1132	2000-03
4. Natalie Klevan	1114	1999-02
5. Traci Tisch	1113	1992-95
6. Kathryn Sprague	1005	2004-07
7. Jamie Fitzwater	954	2000-03
8. Leigh Reiniche	953	2000,02-04
9. Lindsey Stock	926	1999-02
10. Taylor Noland	867	2006-08

ATTACK ATTEMPTS PER SET		
1. Jodie Hempen	9.39	1997-98
2. Leigh Reiniche	9.29	2000,02-04
3. Heather Kea	8.52	2000-03
4. Brooke Burton	8.19	1998-99
5. Erin Wayne	8.13	1993-94
6. Natalie Klevan	8.07	1999-02
7. Jamie Hollins	7.83	2004-06
8. Jamie Fitzwater	7.44	2000-03
9. Rebecca Palmer	7.39	2002-05
10. Kelly Potthast	7.36	1996-97

ASSISTS PER SET		
1. Lindsey Vicknair	12.00	1999-02
2. Helen Joyce	9.16	1992-93
3. Jill Smith	8.34	1994-97
4. Emily Steinbeck	6.76	2007-08
5. Shelby Knose	6.74	2004-07
6. Morgan Kilpatrick	5.99	2005-07
7. Maribeth Hanneman	5.30	2001-03
8. Andy Gilliland	4.80	1993-94
9. Sara Duffie	3.92	1997-98
10. Amie Johnson	1.57	1996-98

DIGS PER SET		
1. Anna Gautreau	5.00	2005-07
2. Kelly Potthast	4.67	1996-97
3. Jodie Hempen	3.55	1997-98
4. Heather Kea	3.34	2000-03
5. Stefanie Dubach	3.16	1999-02
6. Erin Wayne	3.06	1993-94
7. Tammy Konitzer	2.92	2003-06
8. Leigh Reiniche	2.85	2000,02-04
9. Jamie Hollins	2.66	2004-06
10. Natalie Klevan	2.63	1999-02

KILLS PER SET		
1. Jodie Hempen	3.28	1997-98
2. Rachel Ahlers	3.18	1999-02
3. Leigh Reiniche	3.16	2000,02-04
4. Heather Kea	3.07	2000-03
5. Natalie Klevan	2.84	1999-02
6. Traci Tisch	2.80	1992-95
7. Erin Wayne	2.76	1993-94
8. Jamie Fitzwater	2.73	2000-03
9. Amy Ohrt	2.65	1994-97
10. Kelly Potthast	2.62	1996-97

ATTACK PERCENTAGE		
1. Rachel Ahlers	.347	1999-02
2. Kathryn Sprague	.302	2004-07
3. Lindsey Stock	.301	1999-02
4. Jamie Fitzwater	.245	2000-03
5. Tabbi Runyon-Davis	.229	2006-07
6. Amy Ohrt	.226	1994-97
7. Mandy Krol	.217	2003-04
8. Traci Tisch	.211	1992-95
9. Shelby Knose	.207	2004-07
10. Heather Kea	.188	2000-03

ACES		
1. Traci Tisch	150	1992-95
2. Carrie Smith	143	1993-96
3. Lindsey Vicknair	142	1999-02
4. Stefanie Dubach	113	1999-02
5. Natalie Klevan	112	1999-02
6. Leigh Reiniche	109	2000,02-04
7. Jill Smith	102	1994-97
8. Lenora McKinzie	98	1994-95
9. Shelby Knose	92	2004-07
10. Brooke Burton	86	1998-99

BLOCKS		
1. Kathryn Sprague	545	2004-07
2. Rachel Ahlers	463	1999-02
3. Traci Tisch	434	1992-95
4. Sarah Jett	397	2005-07
5. Amy Ohrt	375	1994-97
6. Dimphy Sasse	318	2003-07
7. Lindsey Stock	283	1999-02
8. Liz Chancellor	280	1995-98
9. Rebecca Palmer	262	2002-05
10. Lindsey Vicknair	250	1999-02

ATTACKS		
1. Amy Ohrt	3285	1994-97
2. Natalie Klevan	3164	1999-02
3. Heather Kea	3145	2000-03
4. Traci Tisch	2874	1992-95
5. Leigh Reiniche	2806	2000,02-04
6. Jamie Fitzwater	2603	2000-03
7. Rachel Ahlers	2575	1999-02
8. Taylor Noland	2463	2006-08
9. Jamie Hollins	2443	2004-06
10. Rebecca Palmer	2388	2002-05

ASSISTS		
1. Lindsey Vicknair	5050	1999-02
2. Jill Smith	3302	1994-97
3. Shelby Knose	2661	2004-07
4. Helen Joyce	2098	1992-93
5. Emily Steinbeck	1291	2007-08
6. Morgan Kilpatrick	1016	2005-07
7. Maribeth Hanneman	927	2001-03
8. Jenni Driscoll	795	1998
9. Andy Gilliland	619	1993-94
10. Heather Grumke	521	2004

DIGS		
1. Stefanie Dubach	1401	1999-02
2. Heather Kea	1234	2000-03
3. Carrie Smith	1182	1993-96
4. Tammy Konitzer	1164	2003-06
5. Anna Gautreau	1094	2005-07
6. Natalie Klevan	1030	1999-02
7. Lindsey Vicknair	972	1999-02
8. Jill Smith	919	1994-97
9. Jill Harris	865	1994-96
10. Leigh Reiniche	861	2000,02-04

BLOCKS PER SET		
1. Kathryn Sprague	1.30	2004-07
2. Rachel Ahlers	1.23	1999-02
3. Sarah Jett	1.16	2005-07
4. Traci Tisch	1.09	1992-95
5. Dimphy Sasse	0.89	2004-07
6. Rebecca Palmer	0.81	2002-05
7. Lindsey Stock	0.80	1999-02
8. Gentry Early	0.79	1992-93
9. Amy Ohrt	0.79	1994-97
10. Mandy Kroil	0.72	2003-04

# INDIVIDUAL MATCH RECORD BOOKS

## TOP 10 KILL PERFORMANCES

1...78 ... Heather Kea vs. Eastern Kentucky	10/18/03
2...24 ... Leigh Reinich vs. Memphis	9/30/03
t3...23 ... Leigh Reinich vs. Evansville	9/23/03
t3...23 ... Taylor Noland vs. Southeast Missouri	10/18/08
t5...22 ... Jamie Hollins at Murray State	11/7/06
t5...22 ... Leigh Reinich vs. UNC-Greensboro	9/4/04
t5...22 ... Leigh Reiniche vs. Toledo	9/13/03
t8...20 ... Breanne Carey at Lipscomb	10/7/2008
t8...20 ... Lauren Montague vs. Austin Peay	10/27/07
t8...20 ... Kathryn Sprague at Louisiana-Lafayette	9/25/07
t8...20 ... Kathryn Sprague vs. Samford	9/15/07
t8...20 ... Leigh Reiniche vs. James Madison	9/12/03

## TOP 10 SERVICE ACE PERFORMANCES

t1...6 ... Jamie Hollins vs. Tennessee Tech	10/21/05
t1...6 ... Shelby Knose vs. South Carolina State	9/26/06
t1...6 ... Dimphy Sasse vs. Alcorn State	9/1/06
t4...5 ... Breanne Carey vs. Winston-Salem State	9/24/06
t4...5 ... Breanne Carey vs. South Carolina State	9/26/06
t4...5 ... Breanne Carey at IUPUI	9/9/06
t4...5 ... Jamie Hollins vs. Morehead State	10/28/05
t4...5 ... Jamie Hollins vs. McNeese State	9/9/05
t4...5 ... Morgan Kilpatrick vs. Ark.-Pine Bluff	9/3/05
t4...5 ... Shelby Knose vs. Murray State	10/12/04
t4...5 ... Taylor Noland vs. Winston-Salem State	9/24/06
t4...5 ... Leigh Reiniche at Samford	10/2/04
t4...5 ... Leigh Reinich vs. Southern Illinois	10/5/04

## TOP 10 TEAM KILLS PERFORMANCES

1...78 ... vs. Memphis	8/30/03
2...74 ... at Murray State	11/7/06
3...73 ... vs. Arkansas State	10/19/04
t4...72 ... vs. Austin Peay	10/27/07
t4...72 ... vs. Eastern Kentucky	10/29/05
t6...71 ... at Louisiana-Lafayette	9/25/07
t6...71 ... vs. Eastern Kentucky	10/18/03
8...70 ... at Lipscomb	10/7/08
t9...69 ... at Central Arkansas	9/8/07
t9...69 ... vs. James Madison	9/12/03
t9...69 ... vs. Evansville	9/23/03

## TOP 10 HITTING PERCENTAGES

1... .625 Leigh Reiniche vs. Tennessee State	10/7/04
t2... .600 Ashley Doherty at Indiana	9/4/09
t2... .600 Ashley Doherty vs. Centenary	8/28/09
t2... .600 Kathryn Sprague vs. Miss. Valley State	9/7/07
5... .565 Sarah Jett at Wofford	9/15/06
6... .556 Jamie Hollins at Murray State	11/7/06
t7... .550 Britany Wilburn vs. Northwestern State	8/29/08
t7... .550 Dimphy Sasse vs. Morehead State	10/7/06
9... .548 Rebecca Palmer vs. Southern Illinois	10/5/04
10... .545 Kathryn Sprague at Louisiana-Lafayette	9/25/07

## TOP 10 DIGS PERFORMANCES

1...39 ... Kasey Elswick vs. Morehead State	9/19/09
2...34 ... Anna Gautreau vs. Austin Peay	10/27/07
3...31 ... Leigh Reiniche at Southeast Missouri	11/13/04
4...30 ... Anna Gautreau at Lipscomb	10/24/06
t5...29 ... Jennifer Roberts at Lipscomb	10/7/08
t5...29 ... Anna Gautreau vs. Southeast Missouri	10/14/06
t5...29 ... Anna Gautreau at Central Arkansas	9/8/07
t8...28 ... Anna Gautreau at Louisiana-Lafayette	9/25/07
t8...28 ... Anna Gautreau at Morehead State	10/27/06
t8...28 ... Megan Hitt vs. Murray State	10/17/06

## TOP 10 TEAM HITTING PERCENTAGE PERFORMANCES

1... .527 (49-10-74) ... vs. Sewanee	8/30/03
2... .488 (53-13-82) ... vs. Winston-Salem State	9/24/06
3... .425 (39-5-80) ... vs. South Carolina State	9/26/06
4... .413 (52-9-104) ... vs. Samford	10/4/03
5... .409 (44-6-93) ... at Wofford	9/15/06
6... .358 (51-13-106) ... vs. Samford	11/4/06
7... .357 (41-11-84) ... vs. Arkansas-Pine Bluff	9/3/05
8... .356 (47-15-90) ... vs. Tennessee State	10/7/04
9... .347 (47-12-101) ... vs. Trevecca	9/12/06
10... .321 (53-11-131) ... vs. Eastern Illinois	10/13/06

## TOP 10 TOTAL BLOCK PERFORMANCES

1...12 ... Kathryn Sprague at Austin Peay	9/30/06
t2...11 ... Sarah Jett at Eastern Illinois	9/23/06
t2...11 ... Kathryn Sprague vs. Eastern Kentucky	10/29/05
t2...11 ... Kathryn Sprague at Austin Peay	9/28/07
t5...10 ... Sarah Jett vs. Arkansas State	9/7/07
t5...10 ... Sarah Jett at Eastern Illinois	9/21/07
t5...10 ... Sarah Jett at Austin Peay	9/30/06
t5...10 ... Kathryn Sprague at Morehead State	10/8/05
t5...10 ... Kathryn Sprague vs. Southeast Missouri	10/14/06
t5...10 ... Kathryn Sprague vs. Lipscomb	10/25/07

## TOP 10 ASSISTS PERFORMANCES

1...63 ... Maribeth Hanneman vs. Memphis	9/30/03
2...60 ... Maribeth Hanneman vs. James Madison	9/12/03
3...54 ... Emily Steinbeck vs. Southeast Missouri	10/18/08
4...53 ... Trish Schroder vs. Eastern Kentucky	10/18/03
t5...51 ... Shelby Knose at Tennessee Tech	10/6/07
t5...51 ... Emily Steinbeck at Eastern Illinois	10/28/08
t7...50 ... Shelby Knose at Arkansas State	9/7/05
t7...50 ... Trish Schroder vs. Evansville	9/23/03
t7...50 ... Emily Steinbeck vs. Eastern Kentucky	9/27/08
10...49 ... Morgan Kilpatrick vs. IUPUI	9/10/05

## TOP 10 TEAM BLOCK PERFORMANCES

1...25.0 ... at Austin Peay	9/30/06
2...24.0 ... at Austin Peay	9/28/07
3...20.0 ... vs. Southeast Missouri	10/14/06
4...19.0 ... at Morehead State	10/8/05
5...18.0 ... at Louisiana-Lafayette	9/25/07
...18.0 ... vs. Lipscomb	10/25/07
7...17.0 ... vs. Eastern Kentucky	10/29/05
...17.0 ... at Central Arkansas	9/8/07
9...16.0 ... vs. Eastern Kentucky	10/12/07
...16.0 ... at Eastern Illinois	9/23/06

# SINGLE-SEASON RECORD BOOKS

## KILLS

1. Rachel Ahlers	429	2001
2. Amy Ohrt	412	1996
3. Joanne Jerrick	404	1992
4. Heather Kea	386	2001
5. Jamie Fitzwater	372	2003
6. Natalie Klevan	358	2001
7. Traci Tisch	357	1992
8. Jodie Hempen	346	1998
t9. Kathryn Sprague	346	2007
t9. Taylor Noland	346	2008

## KILLS PER SET

1. Leigh Reiniche	3.71	2003
2. Rachel Ahlers	3.70	2001
3. Jodie Hempen	3.68	1998
4. Leigh Reiniche	3.57	2004
5. Joanne Jerrick	3.48	1992
6. Heather Kea	3.39	2001
7. Rachel Ahlers	3.27	2000
8. Leigh Reiniche	3.23	2004
9. Jamie Fitzwater	3.21	2003
10. Amy Ohrt	3.17	1996

## ATTACKS

1. Jamie Fitzwater	1082	2003
2. Joanne Jerrick	1076	1992
3. Amy Ohrt	1054	1996
4. Natalie Klevan	1039	2001
5. Jodie Hempen	1021	1998
6. Jill Harris	1007	1996
7. Taylor Noland	986	2008
8. Heather Kea	975	2003
9. Breanne Carey	962	2008
10. Rebecca Palmer	939	2005

## ATTACK ATTEMPTS PER SET

1. Jodie Hempen	10.86	1998
2. Leigh Reiniche	10.67	2003
3. Leigh Reiniche	10.41	2004
4. Brooke Burton	9.47	1998
5. Heather Kea	9.29	2003
6. Joanne Jerrick	9.28	1992
7. Jamie Fitzwater	9.17	2003
8. Natalie Klevan	8.57	2002
9. Natalie Klevan	8.54	2000
10. Natalie Klevan	8.45	2001

## ATTACK PERCENTAGE

(Minimum of 3 attempts per game and 40% of games played)

1. Rachel Ahlers	.397	2001
2. Rachel Ahlers	.355	2000
3. Lindsey Stock	.352	2002
4. Kathryn Sprague	.346	2007
5. Rachel Ahlers	.334	2002
6. Lindsey Stock	.323	2001
7. Kathryn Sprague	.308	2006
8. Lindsey Stock	.302	2000
9. Kathryn Sprague	.300	2004
10. Sarah Jett	.290	2007

## ASSISTS

1. Lindsey Vicknair	1418	2001
2. Lindsey Vicknair	1300	2002
3. Lindsey Vicknair	1232	2000
4. Helen Joyce	1181	1992
5. Lindsey Vicknair	1100	1999
6. Shelby Knose	1080	2006
7. Jill Smith	958	1997
Jill Smith	958	1996
9. Jill Smith	932	1995
10. Helen Joyce	917	1993

## ASSISTS PER SET

(Played a minimum 40% of games played)

1. Lindsey Vicknair	12.57	2000
2. Lindsey Vicknair	12.55	2001
3. Lindsey Vicknair	12.50	2002
4. Lindsey Vicknair	10.38	1999
5. Helen Joyce	10.18	1992
6. Maribeth Hanneman	10.13	2003
7. Shelby Knose	10.00	2006
8. Jenni Driscoll	9.70	1998
9. Jill Smith	9.39	1997
10. Jill Smith	8.63	1996

## ACES

1. Joanne Jerrick	75	1992
2. Lindsey Vicknair	53	2001
Ashley Gonzalez	53	2001
Lenora McKinzie	53	1994
5. Brooke Burton	48	1999
6. Natalie Klevan	46	2001
7. Lenora McKinzie	45	1995
8. Stefanie Dubach	44	2001
Stefanie Dubach	44	2000
Traci Tisch	44	1993

## ACES PER SET

(Played a minimum 40% of games played)

1. Joanne Jerrick	0.65	1992
2. Traci Tisch	0.60	1995
3. Leigh Reiniche	0.51	2000
4. Breanne Carey	0.48	2006
t5. Lindsey Vicknair	0.47	2001
t5. Brooke Burton	0.47	1999
t7. Stefanie Dubach	0.45	2000
t7. Jenni Driscoll	0.45	1998
t7. Brooke Burton	0.45	1998
t10. Lenora McKinzie	0.44	1994
t10. Lenora McKinzie	0.44	2004

## DIGS

1. Anna Gautreau	642	2007
2. Jill Harris	496	1996
3. Stefanie Dubach	492	2002
4. Anna Gautreau	452	2006
5. Heather Kea	442	2001
6. Kelly Potthast	435	1996
7. Tammy Konitzer	431	2005
8. Joanne Jerrick	399	1992
t9. Breanne Carey	385	2008
t9. Jennifer Roberts	385	2008

## DIGS PER SET

(Played a minimum 40% of games played)

1. Anna Gautreau	5.31	2007
2. Kelly Potthast	4.76	1997
3. Kelly Potthast	4.63	1996
4. Anna Gautreau	4.61	2006
5. Stefanie Dubach	4.51	2002
6. Jill Harris	3.94	1996
7. Heather Kea	3.88	2001
8. Tammy Konitzer	3.78	2005
9. Kim Tipton	3.59	2004
10. Jodie Hempen	3.57	1998

## BLOCKS

1. Kathryn Sprague	162	2005
2. Sarah Jett	161	2007
3. Rachel Ahlers	160	2002
4. Kathryn Sprague	146	2006
5. Kathryn Sprague	142	2007
6. Rachel Ahlers	140	2001
7. Sarah Jett	132	2006
8. Traci Tisch	130	1992
9. Traci Tisch	127	1994
10. Amy Ohrt	122	1996

## BLOCKS PER SET

(Played a minimum 40% of games played)

1. Rachel Ahlers	1.50	2002
2. Kathryn Sprague	1.40	2006
3. Kathryn Sprague	1.38	2005
4. Sarah Jett	1.36	2007
5. Rachel Ahlers	1.29	2000
6. Kathryn Sprague	1.23	2004
Rebecca Palmer	1.23	2004
8. Sarah Jett	1.22	2006
9. Rachel Ahlers	1.21	2001
10. Kathryn Sprague	1.17	2007