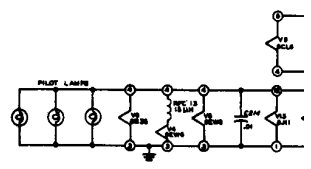
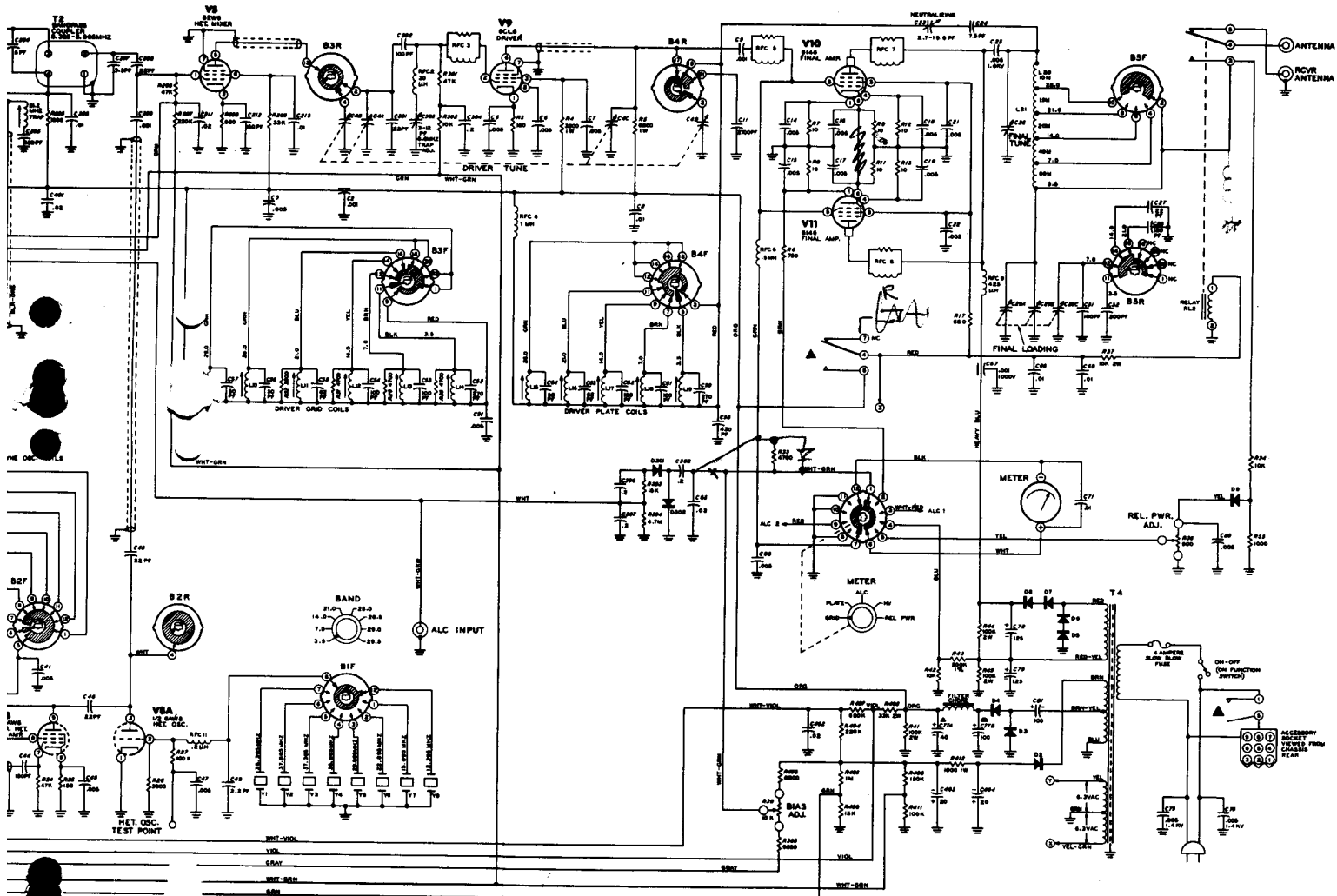


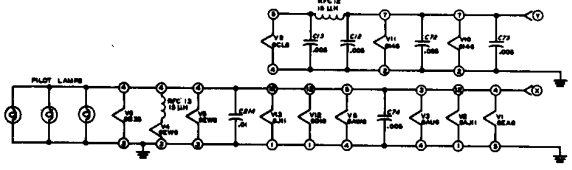
**SCHEMATIC OF THE KIT  
SSB TRANSMITTER  
MODEL SB-401**

- NOTES:
1. RESISTOR AND CAPACITOR NUMBERS ARE IN THE FOLLOWING GROUPS:  
 0-99 PARTS MOUNTED ON THE CHASSIS  
 100-199 PARTS ON THE CARRIER GENERATOR CIRCUIT BOARD  
 200-299 PARTS ON THE MIXER BANDPASS CIRCUIT BOARD  
 300-399 PARTS MOUNTED ON TERMINAL BOARD #1  
 400-499 PARTS MOUNTED ON TERMINAL BOARD #2
  2. ALL RESISTORS ARE 1/2 WATT UNLESS MARKED OTHERWISE. RESISTOR VALUES ARE IN OHMS (K = 1,000, M = 1,000,000).
  3. ALL CAPACITOR VALUES ARE IN  $\mu$ M UNLESS MARKED OTHERWISE.
  4. ALL SWITCH WAFERS SHOWN IN FULL COUNTERCLOCKWISE POSITION, AS VIEWED FROM THE KNOB END OF THE SHAFT.
  5. SWITCH WAFERS ARE IDENTIFIED AS IN THE FOLLOWING EXAMPLE:  
 B (BAND)      S (SPRING)  
 FRONT PANEL NAME OF SWITCH WITH THE SWITCH VIEWED FROM THE FRONT PANEL.      F = FRONT SIDE OF THE WAFER. R = REAR SIDE OF THE WAFER.
  6. REFER TO THE CHASSIS PHOTOGRAPHS AND CIRCUIT BOARD X-RAY VIEWS FOR THE PHYSICAL LOCATION OF PARTS.
  7. RELAY IS SHOWN IN STANDBY POSITION.
  8. VOLTAGES AND RESISTANCE MEASUREMENTS LISTED ON CHARTS BEGINNING ON PAGE 148 OF MANUAL.





- NOTES:**
1. RESISTOR AND CAPACITOR NUMBERS ARE IN THE FOLLOWING GROUPS:  
 0-99 PARTS MOUNTED ON THE CHASSIS  
 100-199 PARTS ON THE CARRIER GENERATOR CIRCUIT BOARD  
 200-299 PARTS ON THE MIXER BANDPASS CIRCUIT BOARD  
 300-399 PARTS MOUNTED ON TERMINAL BOARD #1  
 400-499 PARTS MOUNTED ON TERMINAL BOARD #2  
 ALL RESISTORS ARE 1/2 WATT UNLESS MARKED OTHERWISE. RESISTOR VALUES ARE IN OHMS (K = 1,000, M = 1,000,000).  
 ALL CAPACITOR VALUES ARE IN  $\mu$ F UNLESS MARKED OTHERWISE.
  4. ALL SWITCH WAFERS SHOWN IN FULL COUNTERCLOCKWISE POSITION, AS VIEWED FROM THE KNOB END OF THE SHAFT.
  5. SWITCH WAFERS ARE IDENTIFIED AS IN THE FOLLOWING EXAMPLE:  
 S (BAND)      F  
 FRONT PANEL      WAFER NUMBER      F = FRONT SIDE OF THE WAFER,  
 WITH THE SWITCH      VIEWED FROM THE      R = REAR SIDE OF THE WAFER,  
 VIEWED FROM THE      FRONT PANEL.
  6. REFER TO THE CHASSIS PHOTOGRAPHS AND CIRCUIT BOARD X-RAY VIEWS FOR THE PHYSICAL LOCATION OF PARTS.
  7. RELAY IS SHOWN IN STANDBY POSITION.
  8. VOLTAGES AND RESISTANCE MEASUREMENTS LISTED ON CHARTS BEGINNING ON PAGE 148 OF MANUAL.



**CHEMICAL OF THE  
 KITKIT®  
 SSB TRANSMITTER  
 MODEL SB-401**